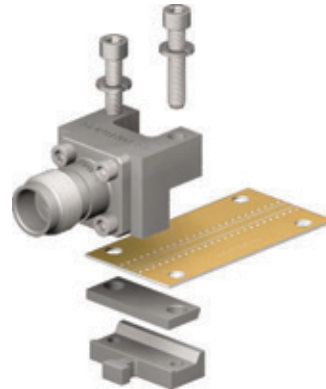
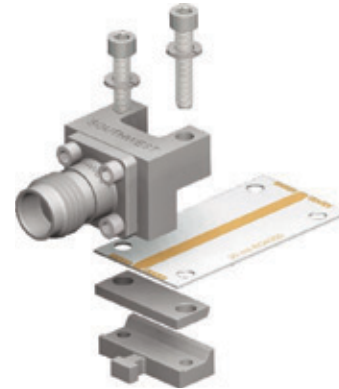


Specifications

Applications



Grounded Coplanar



Microstrip with Top Ground Launch

Launch Design
Assistance Available.

Electrical:

- Mode Free Through:
27.0 GHz (SMA)
40.0 GHz (2.92 mm)
50.0 GHz (2.40 mm)
- Low VSWR
- Low Insertion Loss

Materials / Construction:

Connector:

- Housing: Stainless Steel, CRES Alloy UNS-S30300 Per ASTM A 582, Passivated Per ASTM A 967
- Contact: Beryllium Copper (BeCu), UNS-C17300 Per ASTM B 196/197, Gold Plated Per MIL-G-45204 or ASTM B 488
- Center Contact Capture: Rigid Bead Capture with Ultem 1000 Per ASTM D 5205
- Virgin TFE Fluorocarbon Per ASTM D 1710 and ASTM D 1457 (SMA only)
- KEL-F Per ASTM D 1430 (2.92 mm & 2.40 mm only)
- Connector Interfaces:
SMA – Per MIL-STD-348, Figs. 310-1 and 310-2
2.92 mm – Per MIL-STD-348, Figs. 324-1 and 324-2
2.40 mm – Per MIL-STD-348, Figs. 323-1 and 323-2

Transition Block & Clamp Plates:

- Housing: Brass Alloy UNS-C48500 Per ASTM-B36, Nickel Plate Per ASTM 2404B
- Transition Pin: BeCu Per UNS-C17300 Per ASTM B 196/197, Gold Plate Per MIL-G-45204 or ASTM B 488
- Dielectric: Virgin TFE Fluorocarbon Per ASTM D 1710 and ASTM D 1457,
- Fasteners: Per ANSI B18.3