

THE PERFORMANCE LEADER IN MICROWAVE CONNECTORS

2022 - 2023



0.9 mm
SuperMini
DC to 67 GHz

Ultra-Miniature Threaded
Coupling Coaxial Assemblies

- Low VSWR
- Low Insertion Loss Low RF Leakage
- High Temperature Rugged
and Durable Excellent Repeatability



0.9 SuperMini

0.9mm SuperMini DC to 67 GHz

0.9 mm SuperMini connectors offer the superior performance and quality of Southwest Microwave's standard-size, high frequency connectors in a miniaturized footprint ideal for reduced-size PCB and panel applications. This versatile new line includes field-replaceable flange mount and thread-in connectors, solder-on end launch and vertical launch connectors plus complete cable assemblies. 0.9 mm SuperMini connectors offer well-matched impedance, excellent repeatability and the industry's lowest VSWR, insertion loss and RF leakage.

SPECIFICATIONS

Electrical:

- Mode Free Through 67 GHz
- Low VSWR: DC to 18.0 GHz 1.13:1 max
18.0 to 40.0 GHz 1.19:1 max
40.0 to 50.0 GHz 1.20:1 max
50.0 to 67.0 GHz 1.25:1 max
- Low RF Leakage ≤ -100 dB @ 26.5 GHz
- Low Insertion Loss

Temperature:

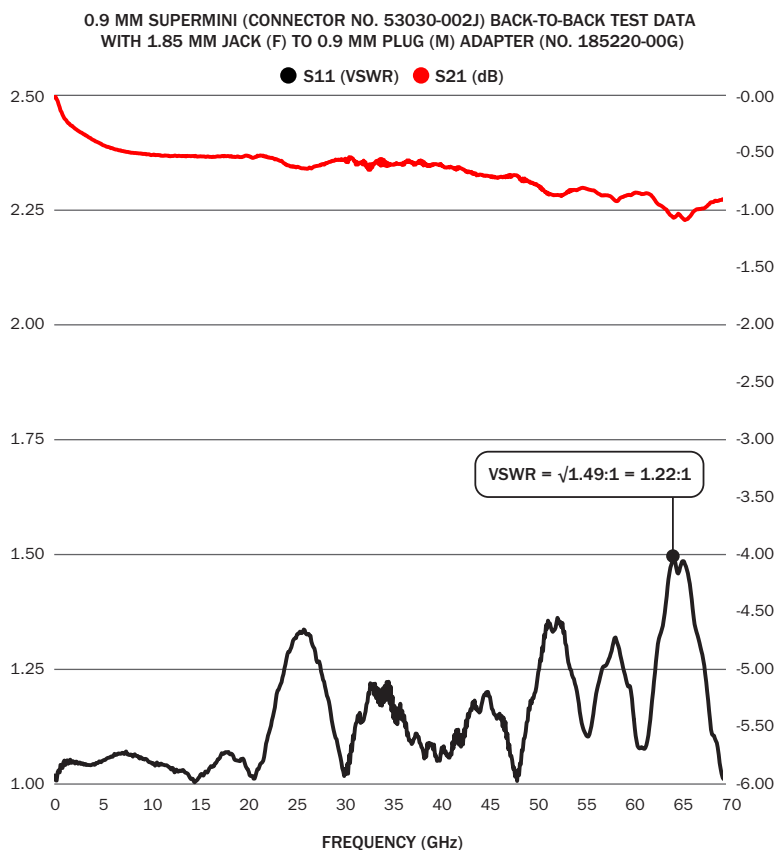
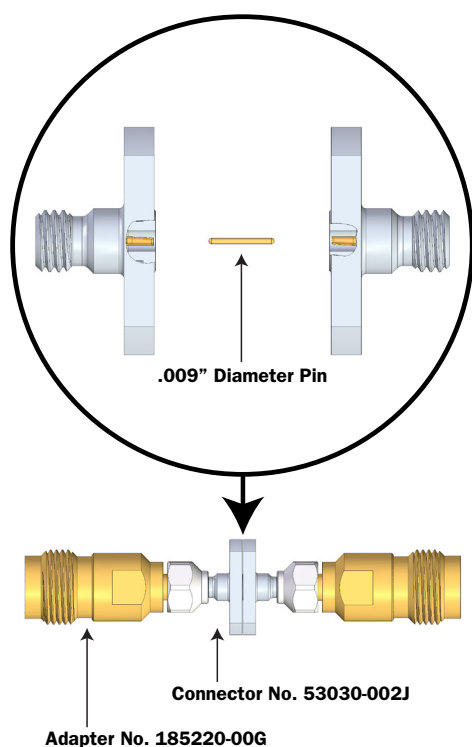
- -55°C to + 165°C

Materials / Construction:

- Materials and finishes vary by product type.
For data, refer to website or request Product Drawings and Specifications for desired connector.

TEST DATA

Data shown represents two 0.9 mm SuperMini 9 mil pin connectors tested back-to-back with 1.85 mm Jack (F) to 0.9 mm Plug (M) adapters, as calibration standards for the 0.9mm SuperMini interface are not available. To extract VSWR for a single connector with adapter, take the square root of the VSWR data point and divide the insertion loss data point by two.



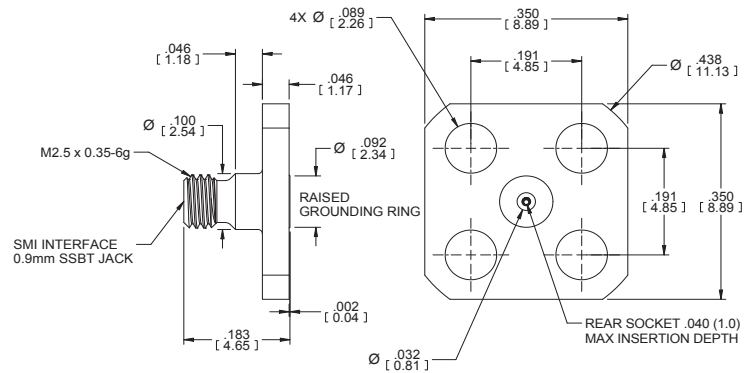
VSWR = $\sqrt{1.49:1} = 1.22:1$ for each connector with adapter, as shown.

Contact Southwest Microwave for performance specifications for all other 0.9 mm SuperMini connectors.

FLANGE JACK (FEMALE): 4 HOLE .350 SQUARE

ACCEPTS PIN DIA. CONNECTOR NO.

.012	53030-001J
.009	53030-002J

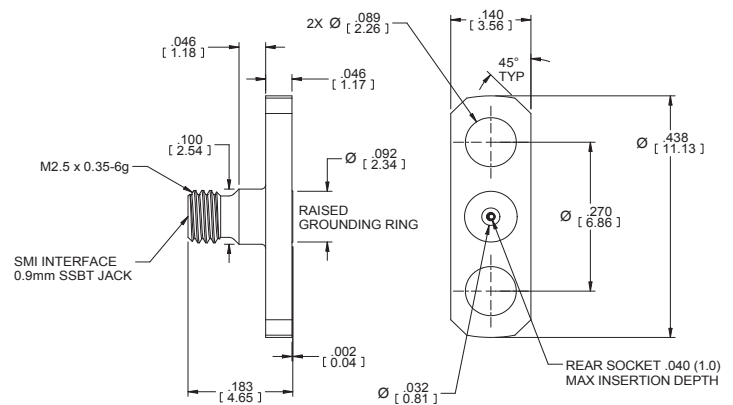


FLANGE JACK (FEMALE): 2 HOLE .438 X .140

ACCEPTS PIN DIA.

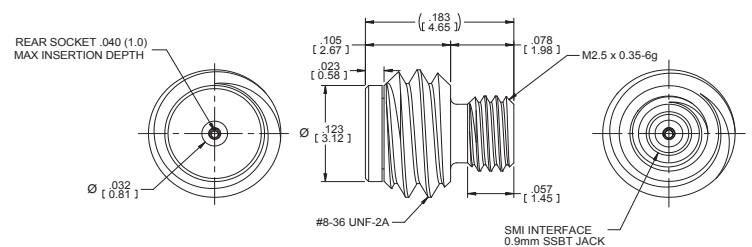
CONNECTOR NO.

.012	53029-003J
.009	53029-005J

THREAD-IN: STEP THREAD JACK (FEMALE):
STANDARD #8-36 UNF-2A REAR THREAD

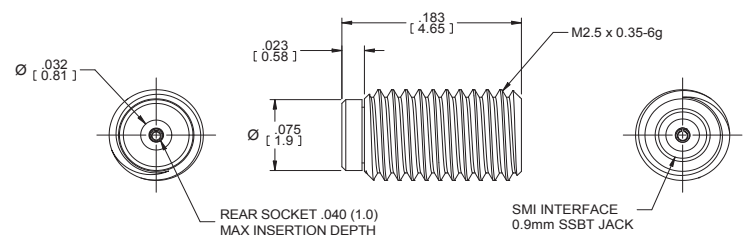
ACCEPTS PIN DIA. CONNECTOR NO.

.012	53022-002J
.009	53022-008J

THREAD-IN: STRAIGHT THREAD JACK (FEMALE):
STANDARD M2.5 X 0.35 STRAIGHT THREAD

ACCEPTS PIN DIA. CONNECTOR NO.

.012	53022-007J
.009	53022-006J

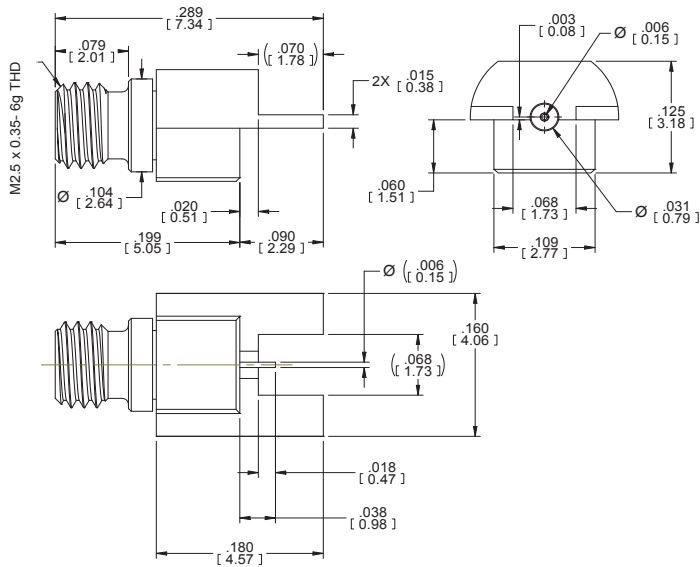


THE PERFORMANCE LEADER IN MICROWAVE CONNECTORS

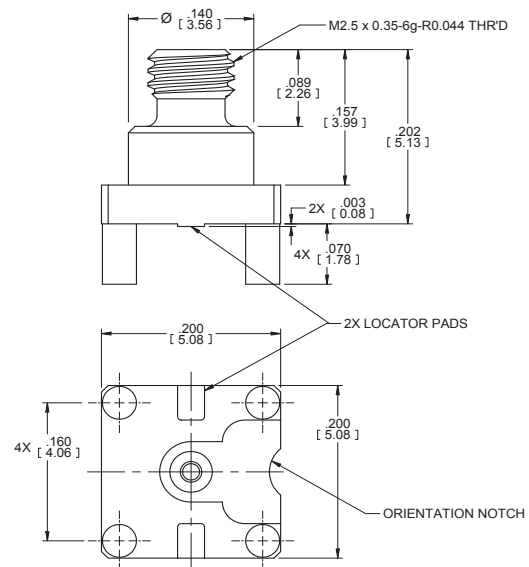


BOARD MOUNT CONNECTORS (SOLDER-ON) 0.9mm SuperMini DC to 67 GHz

END LAUNCH JACK (FEMALE)
53056-005J

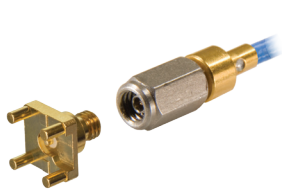


4 POST VERTICAL LAUNCH JACK (FEMALE)
53050-004J

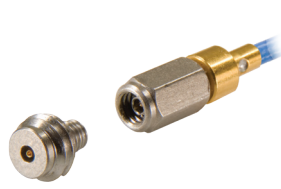


CABLE ASSEMBLIES

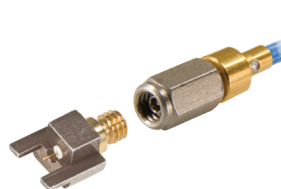
Southwest Microwave can supply complete cable assemblies (0.047 and 0.086 cable) to simplify high-performance interface to our full range of 0.9 mm SuperMini connectors. Contact the factory for more information



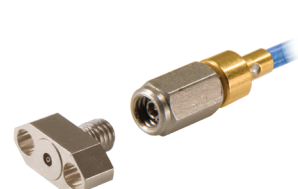
VERTICAL LAUNCH



THREAD-IN



END LAUNCH



FLANGE MOUNT

PRECISION GRADE ADAPTERS

1.85 mm JACK (F) TO 0.9 mm PLUG (M) ADAPTER: 185220-00G

1.85 mm PLUG (M) TO 0.9 mm PLUG (M): 185240-00G

1.85 mm JACK (F) TO 0.9 mm JACK (F) ADAPTER: 185310-00G

1.85 mm PLUG (M) TO 0.9 mm JACK (F) ADAPTER: 185330-00G

0.9 mm PLUG (M) TO 1.0 mm JACK (F) ADAPTER: 245220-00SF

0.9 mm JACK (F) TO 1.0 mm JACK (F) ADAPTER: 245310-00SF

0.9 mm JACK (F) TO 0.9 mm JACK (F) ADAPTER: 535310-00G