



## Precision Adapters DC to 110 GHz

THE PERFORMANCE LEADER IN  
MICROWAVE CONNECTORS



- Low VSWR
- Low Insertion Loss
- Low RF Leakage
- High Temperature
- Rugged & Durable
- Excellent Repeatability

## FEATURES & SPECIFICATIONS

Southwest Microwave offers a full range of within-series and between-series precision adapters with near metrology-grade performance.

### KEY FEATURES

- High performing connector savers, DC to 125 GHz
- Economical solution for critical production and testing
- Approved for demanding environments such as Space and other Hi-Rel applications
- High repeatability and accuracy
- Available in various configurations

### ELECTRICAL

Low VSWR:		
DC to 18.0 GHz		1.10:1 Max
18.0 to 27.0 GHz		1.15:1 Max
27 to 40 GHz		1.15:1 Max
40 to 50 GHz		1.18:1 Max
50 to 90 GHz		1.25:1 Max
90 to 110 GHz		1.28:1 Max
110 to 125 GHz		1.35:1 Max
Low RF Leakage: $\leq -100$ dB		
Low Insertion Loss		

### TEMPERATURE

**-55°C to +165°C:**  
N to SMA, SMA to SMA, 2.92 mm to 1.85 mm, 1.85 mm to 1.85 mm, 1.85 mm to SSBT, SSBT to SSBT, SSBT to 1.0 mm and 1.0 mm to 1.0 mm

**-55°C to +135°C:**  
All other adapters

Contact Southwest Microwave for additional information.

### 0.8 mm (145 GHz)



**COMING SOON:** Southwest Microwave's newest high-performance connector. The 0.8 mm is an innovative and advanced thread-in connector that maintains optimal signal integrity while providing the industry's lowest VSWR, RF leakage and insertion loss.

### 1.0 mm (125 GHz)



**2430-00SF**  
F to M



**2431-00SF**  
M to M



**2432-00SF**  
F to F

### 1.35 mm to 1.0 mm (90 GHz)



**222430-00SF**  
M to F



**222410-00SF**  
F to F

### 1.0 mm to 1.85 mm (67 GHz)



**182410-00SF**  
F to F



**182420-00SF**  
F to M



**182430-00SF**  
M to F



**182440-00SF**  
M to M

### 1.85 mm (67 GHz)



**1830-00SF**  
F to M



**1831-00SF**  
M to M



**1832-00SF**  
F to F

# THE PERFORMANCE LEADER IN MICROWAVE CONNECTORS



## 2.40 mm (50 GHz)



**1430-00SF**  
F to M



**1431-00SF**  
M to M



**1432-00SF**  
F to F

## 2.92 mm to 1.85 mm (40 GHz)



**101810-00SF**  
F to F



**101820-00SF**  
F to M



**101830-00SF**  
M to F



**101840-00SF**  
M to M

## 2.92 mm to 2.40 mm (40 GHz)



**101410-00SF**  
F to F



**101420-00SF**  
F to M



**101430-00SF**  
M to F



**101440-00SF**  
M to M

## 2.92 mm (40 GHz)



**1030-00SF**  
F to M



**1031-00SF**  
M to M



**1032-00SF**  
F to F



**1030-10SF**  
F to M (Bulkhead)



**1032-10SF**  
F to F (Bulkhead)



**1032-13SF**  
F to F (Flange Mount)  
O-Ring not included.

## 3.5 mm to 2.40 mm (33 GHz)



**61410-00SF**  
F to F



**61420-00SF**  
F to M



**61430-00SF**  
M to F



**61440-00SF**  
M to M

## SMA (27 GHz)



**230-506SF**  
F to M



**231-502SF**  
M to M



**232-502SF**  
F to F



**232-510SF**  
F to F (Bulkhead)



**232-512SF**  
F to F (Un-Threaded Mount)

## N to SMA (18 GHz)



**2310SF**  
F to F



**2320SF**  
M to F



**2330SF**  
F to M



**2340SF**  
M to M



**2311SF**  
F to M



**2312SF**  
F to F

## SSMA (Airline) to 2.40 mm (40 GHz)



**11410-00SF**  
F to F



**11420-00SF**  
F to M



**11430-00SF**  
M to F



**11440-00SF**  
M to M

## SSBT to 1.0 mm (67 GHz)



**535310-00G**  
F to F



**245220-00SF**  
M to F



**245310-00SF**  
F to F

## SSBT to 1.85 mm (67 GHz)



**185220-00G**  
M to F



**185240-00G**  
M to M

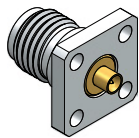


**185310-00SF**  
F to F

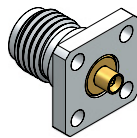


**185330-00G**  
F to M

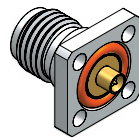
## SSBB Board-to-Board Adapters



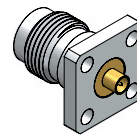
**105310-00SF**  
2.92 mm Smooth Bore



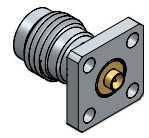
**105310-01SF**  
2.92 mm Detent



**105310-02SF**  
2.92 mm Detent



**145310-00SF**  
2.4 mm Smooth Bore



**1855010-01SF**  
1.85 mm Smooth Bore

## SSBB to SSPB Size 16 Pin Contact for MIL-DTL-38999



**50255010-01G**  
Smooth Bore