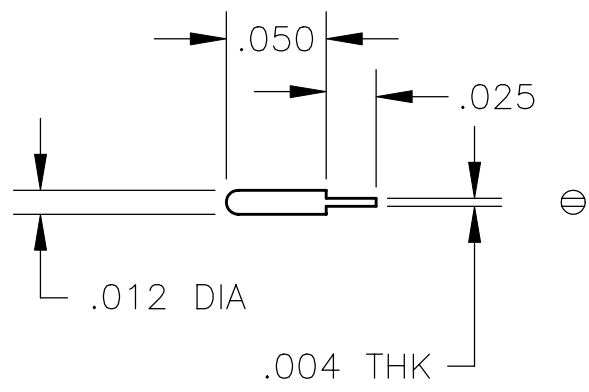
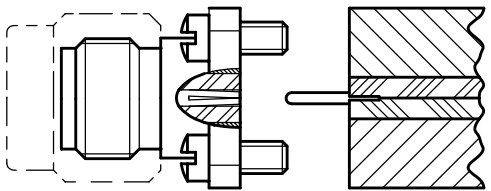


NOTE: Information herein is believed by Southwest Microwave, Inc. to be accurate. However, Southwest Microwave assumes no responsibility for any omissions or errors or inaccuracies for its use or for any infringements of patents or other rights of third parties that may result from its use. Data is intended for informational purpose only and does not constitute a contract of sale or any express or implied warranty, including any warranty of merchant ability or fitness for a particular purpose.

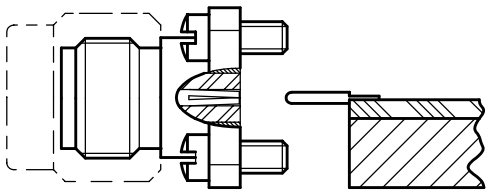


PIN/TAB

APPLICATION



STRIPLINE



MIC

BeCu
 ALLOY UNS-C17300 PER
 ASTM-B-196/197.
 GOLD PLATE PER MIL-G-45204.

MATERIAL & FINISH

CATALOG CONNECTOR MODELS

SMA	2.92mm
211-10,-12,-20SF	1011-01,-11SF
212-13,-26,-29SF	1012-01,-11SF
213-08,-11,-24SF	1013-01,-11,-21SF
214-08,-11,-24SF	1014-01,-11,-21SF

REV: A3 ECN: 6300 DATE: 6-29-95

DRAWN DK	DATE 9-16-94	APRVD. GH	DATE 9-20-94
-------------	-----------------	--------------	-----------------

TITLE
 1090-05G
 PIN/TAB, .012 DIA X .050L X .025 TAB



Southwest Microwave, Inc.
 9055 South McKerny Street
 Tempe, Arizona 85284-2946
 Telephone (480) 783-0201
 Fax (480) 783-0360

DATE 9/94	DWG. NO. 79K53564	REV. A4
SHEET 1 OF 1		