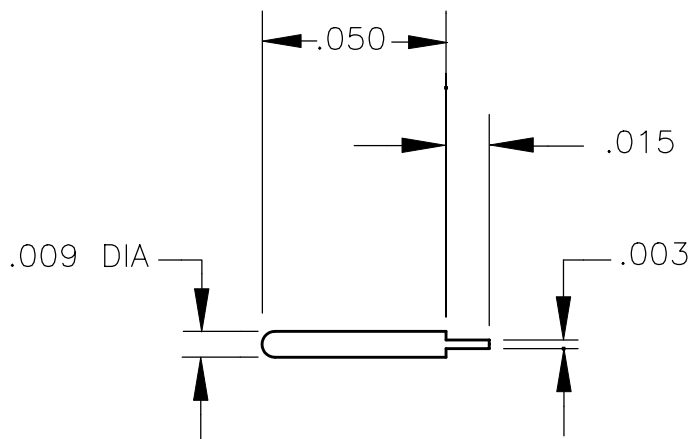
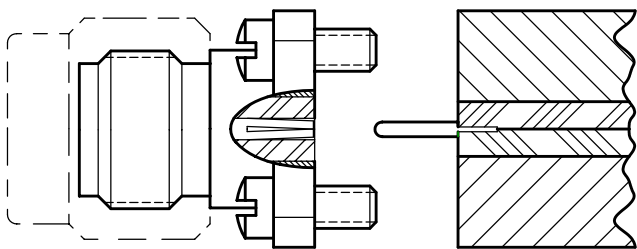


NOTE: Information herein is believed by Southwest Microwave, Inc. to be accurate. However, Southwest Microwave assumes no responsibility for any omissions or errors or inaccuracies for its use or for any infringements of patents or other rights of third parties that may result from its use. Data is intended for informational purpose only and does not constitute a contract of sale or any express or implied warranty, including any warranty of merchant ability or fitness for a particular purpose.



PIN/TAB
1490-01G

APPLICATION



STRIPLINE

PIN/TAB BeCu
UNS-C17300 PER ASTM-B-196/197.
GOLD PLATE PER MIL-G-45204.

MATERIAL & FINISH

A		RELEASE	9/28/01	BL
REV.	ECN	DESCRIPTION	DATE	BL

DRAWN SS	DATE 9/11/01	APRVD. BL	DATE 9/28/01
-------------	-----------------	--------------	-----------------

TITLE
1490-01G
PIN/TAB (.009) DIA X .050 LONG .015 TAB



Southwest Microwave, Inc.
9055 South McKemy Street
Tempe, Arizona 85284-2946
Telephone (480) 783-0201
Fax (480) 783-0360

SCALE NONE	DWG. NO. 79P57122	REV. A
SHEET 1 OF 1		