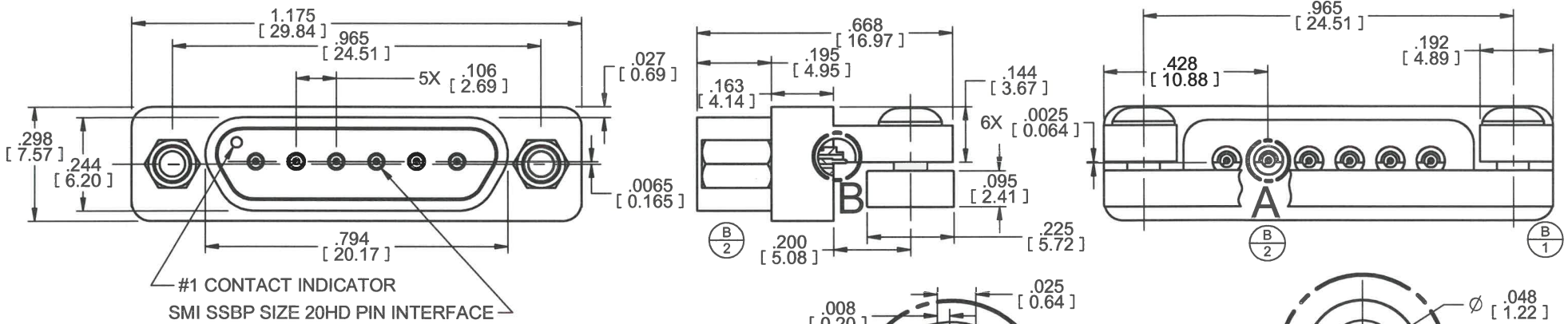


MODEL No.:

17500-4011P

NOTE: Information herein is believed by Southwest Microwave, Inc., to be accurate. However, Southwest Microwave assumes no responsibility for any omissions or errors or inaccuracies for its use or for any infringements of patents or other rights of third parties that may result from its use. Data is intended for informational purpose only and does not constitute a contract of sale or any express or implied warranty, including any warranty of merchantability or fitness for a particular purpose



#1 CONTACT INDICATOR
SMI SSBP SIZE 20HD PIN INTERFACE

3. MATERIAL AND FINISH:

3.1 MATERIALS

3.1.1 OUTER AND CENTER CONTACTS, RETAINER BUSHING:
- BeCu ALLOY UNS-C17300 PER ASTM B196/197

3.1.2 FRONT DIELECTRIC BEAD:
- VIRGIN PTFE FLUOROCARBON PER ASTM D1710, TYPE 1, GRADE 1, CLASS B

3.1.3 REAR DIELECTRIC BEAD:
- ULTEM 1000 PER ASTM D5205

3.1.4 CONNECTOR BODY:
- ALUMINUM, 6061-T6 PER ASTM B221

3.1.5 NUT PLATE, JACK POSTS:
- STAINLESS STEEL, UNS S30300 PER ASTM A582

3.1.6 #2-56 BUTTON HEAD CAP SCREWS:
- 18-8 STAINLESS STEEL

3.2 FINISHES

3.2.1 OUTER AND CENTER CONTACTS, RETAINER BUSHING:
- GOLD PLATE PER MIL-DTL-45204

3.2.2 CONNECTOR BODY:
- ELECTROLESS NICKEL PLATE PER MIL-C-26074

2. CONNECTOR DESIGN IS COMPATIBLE WITH CURRENT MATERIAL AND PROCESS REQUIREMENTS FOR RoHS AND WEEE PER EUROPEAN COMMUNITY DIRECTIVE 2002/95/EC.

1. ALL DIMENSIONS ARE IN INCHES. ALL ANGLES ARE IN DEGREES. DIMENSIONS SHOWN IN BRACKETS [XXX] ARE IN MILLIMETERS.

NOTES: UNLESS OTHERWISE SPECIFIED.

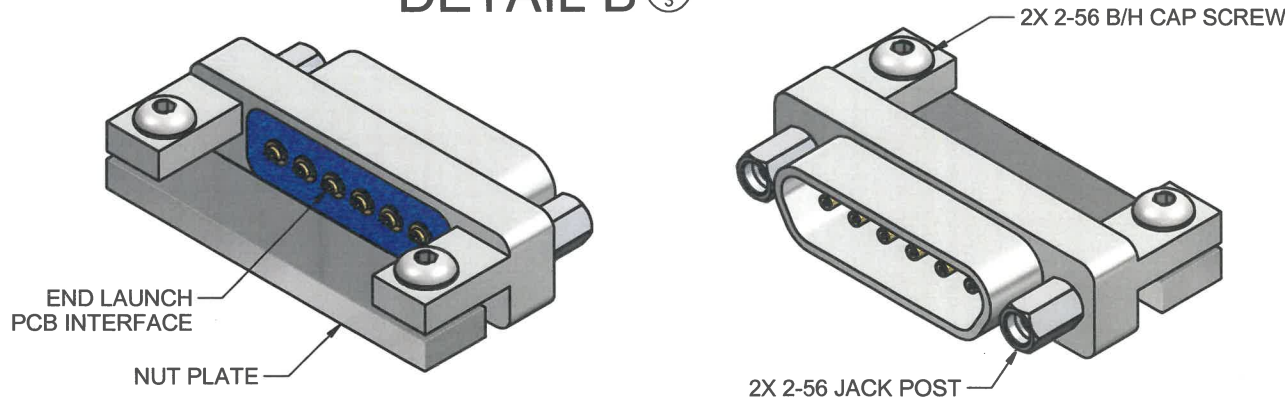
ECN	APRVD:	DATE:	APRVD:	DATE:
9253	B.Clyatt	6/25/14	B.CLYATT	2/27/13

TITLE			
SSBP SIZE 20HD 6 POSITION LOW PROFILE END LAUNCH RECEPTACLE			
DRN BY:	DATE:	MODEL NO.	REV.
		17500-4011P	B
SHEET 1 OF 1		DWG. NO.	79BP61073

CONFIDENTIAL
PROPRIETARY INFORMATION OF
SOUTHWEST MICROWAVE, INC.
THIS DOCUMENT SHALL NOT BE
REPRODUCED IN ANY MANNER



Southwest Microwave, Inc.
9055 South McKemy Street
Tempe, Arizona 85284-2946
Telephone (480) 783-0201
Fax (480) 783-0360



MODEL No.:

17500-4011P

NOTE: Information herein is believed by Southwest Microwave, Inc., to be accurate. However, Southwest Microwave assumes no responsibility for any omissions or errors or inaccuracies for its use or for any infringements of patents or other rights of third parties that may result from its use. Data is intended for informational purpose only and does not constitute a contract of sale or any express or implied warranty, including any warranty of merchantability or fitness for a particular purpose

REV.	ECN	CHANGE DESCRIPTION	REV BY	DATE	APPR.
A		RELEASE		2/27/13	B.C.
B		1. ADDED REAR VIEW. 2. GENERATED SECTION CUTS IN SIDE AND REAR VIEWS TO SHOW GEOMETRY OF "DOG HOUSE" SURROUNDING LAUNCH PIN. 3. CREATED DETAILS "A" AND "B" TO SHOW SIDE AND END GEOMETRY AND DIMENSIONS OF "DOG HOUSE".	DRH	6/25/14	B.C.

ECN	APRVD:	DATE:	APRVD:	DATE:
9253	B. Clyatt	6/25/14	B. CLYATT	2/27/13

TITLE	
SSBP SIZE 20HD 6 POSITION LOW PROFILE END LAUNCH RECEPTACLE	

CONFIDENTIAL
 PROPRIETARY INFORMATION OF
 SOUTHWEST MICROWAVE, INC.
 THIS DOCUMENT SHALL NOT BE
 REPRODUCED IN ANY MANNER



Southwest Microwave, Inc.
 9055 South McKemy Street
 Tempe, Arizona 85284-2946
 Telephone (480) 783-0201
 Fax (480) 783-0360

DRN BY:	DATE:	MODEL NO.	REV.
		17500-4011P	B
SHEET: 1 OF 1	DWG. NO.	79BP61073	