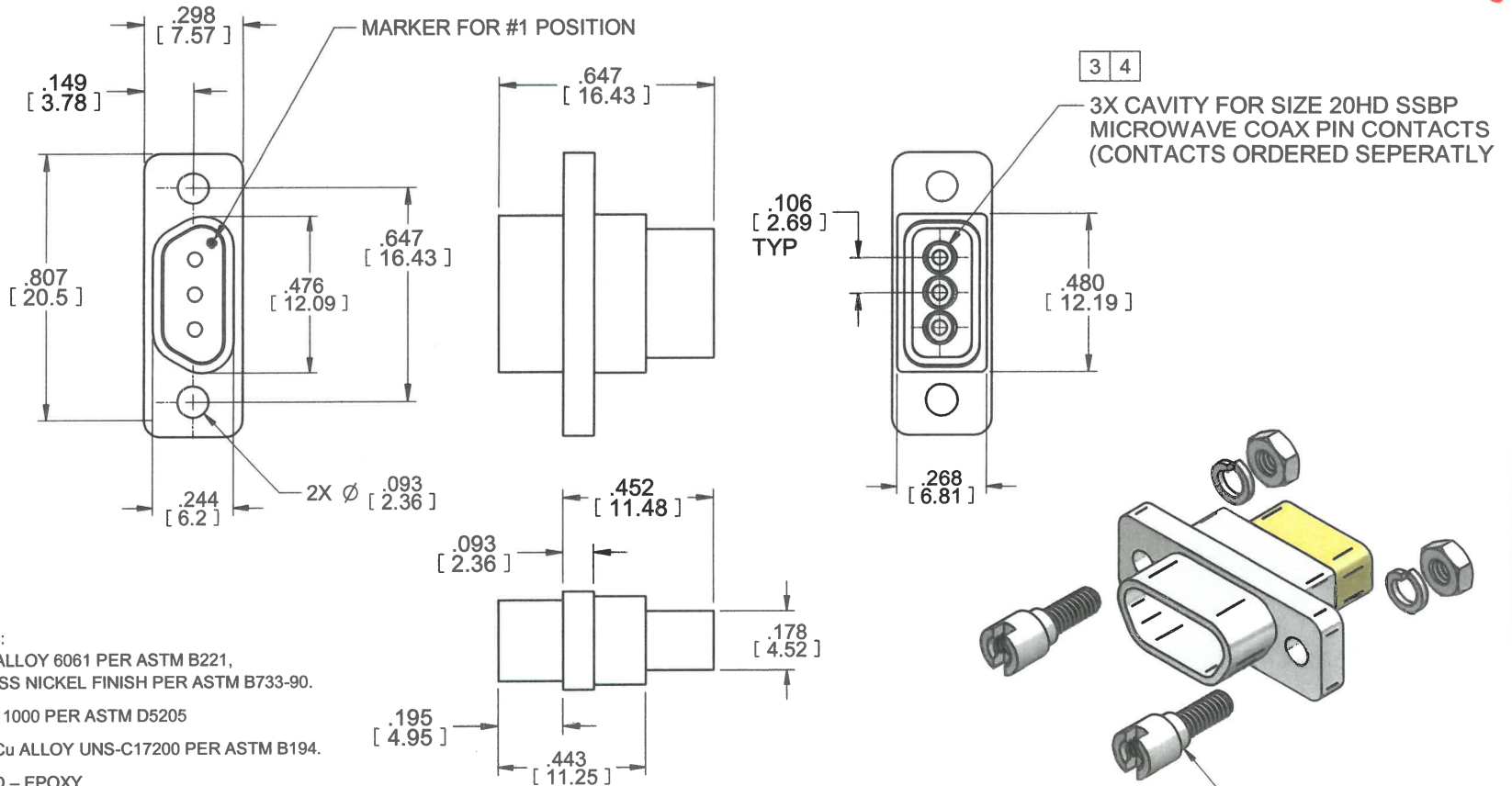


MODEL No.:

17502-4000P

NOTE: Information herein is believed by Southwest Microwave, Inc. to be accurate. However, Southwest Microwave assumes no responsibility for any omissions or errors or inaccuracies for its use or for any infringements of patents or other rights of third parties that may result from its use. Data is intended for informational purpose only and does not constitute a contract of sale or any express or implied warranty, including any warranty of merchant ability or fitness for a particular purpose.



5. MATERIAL AND FINISH:

SHELL – ALUMINUM ALLOY 6061 PER ASTM B221,
ELECTROLESS NICKEL FINISH PER ASTM B733-90.

INSULATOR – ULTEM 1000 PER ASTM D5205

RETAING CLIPS – BeCu ALLOY UNS-C17200 PER ASTM B194.

POTTING COMPOUND – EPOXY

MOUNTING HARDWARE – MOUNTING HARDWARE – CORROSION
RESISTANT STEEL IAW ASTM A484 AND ASTM A582, PASSIVATED
IAW ASTMA967.

4. CONTACT CAVITIES WILL ALSO ACCEPT SIGNAL PIN COAX
CONTACTS PER MIL-C-39029/64.

3. ALL SSBP AND SIGNAL CONTACTS ARE INSERTABLE AND
REMOVEABLE USING STANDARD M81969/39-01
INSERTION/EXTRACTION TOOL.

2. EXTERNAL CONFIG. I.A.W. MIL-DTL-83513

1. ALL DIMENSIONS ARE IN INCHES. ALL ANGLES ARE IN
DEGREES. DIMENSIONS SHOWN IN BRACKETS [XXX] ARE IN
MILLIMETERS.

NOTES: UNLESS OTHERWISE SPECIFIED.

REV B	ECN: 9610	DATE: 3/16/17	APPROV <i>[Signature]</i>	DATE: 3/21/17
 SOUTHWEST MICROWAVE		Southwest Microwave, Inc. 9055 South McKemy Street Tempe, Arizona 85284-2946 Telephone (480) 783-0201 Fax (480) 783-0360		
		TITLE MICRO-D REPECTACLE 3 POSITION FOR SIZE 20HD SSBP COAX PIN CONTACTS		

DRN BY: E.OLSEN		DATE: 9/18/14	MODEL NO. 17502-4000P	REV. B
SCALE: 2:1		DWG. NO. 79BP61818		
SHEET: 1 OF 1				

FSCM NO. **66049**