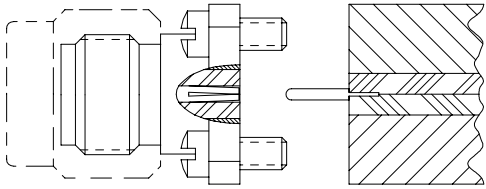
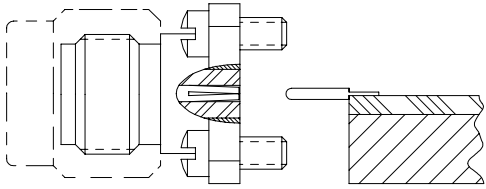


PIN/TAB

APPLICATION



STRIPLINE



MIC


CATALOG CONNECTOR MODELS

- 211-01,-14,-22SF
- 212-01,-08,-21SF
- 213-01,-13,-26SF
- 214-01,-13,-26SF

BeCu
ALLOY UNS-C17300 PER
ASTM-B-196/197.
GOLD PLATE PER MIL-G-45204.

MATERIAL & FINISH

REV: A4 ECN: 6300 DATE: 6-29-95

DRAWN SLM	DATE 5-9-91	APRVD. JK	DATE 5/91	TITLE 290-09G PIN/TAB, .015 DIA X .085L X .040 TAB
 Southwest Microwave, Inc. 9055 South McKemy Street Tempe, Arizona 85284-2946 Telephone (480) 783-0201 Fax (480) 783-0360				DATE 5-9-91 SHEET 1 OF 1
			DWG. NO. 79B51357	REV. A5