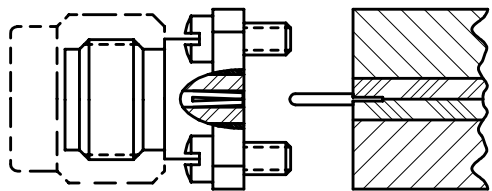
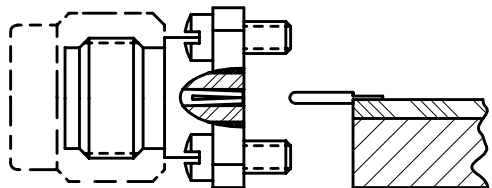


PIN/TAB

APPLICATION



STRIPLINE



MIC

CATALOG CONNECTOR MODELS

- 211-03,-18,-26SF
- 212-03,-10,-25SF
- 213-03,-17,-30SF
- 214-03,-17,-30SF

BeCu COND. 1/2 H TO H
 ALLOY UNS-C17300 PER
 ASTM-B-196/197.
 GOLD PLATE PER MIL-G-45204.

MATERIAL & FINISH

REV: A3 ECN: 6300 DATE: 6-29-95

DRAWN	SLM	DATE	5-9-91	APRVD.	JK	DATE	5/91
-------	-----	------	--------	--------	----	------	------

TITLE	290-10G PIN/TAB, .020 DIA X .080L X .050 TAB
-------	---



Southwest Microwave, Inc.
 9055 South McKemy Street
 Tempe, Arizona 85284-2946
 Telephone (480) 783-0201
 Fax (480) 783-0360

DATE	5-9-91	DWG. NO.	79B51358	REV.	A3
SHEET	1 OF 1				