

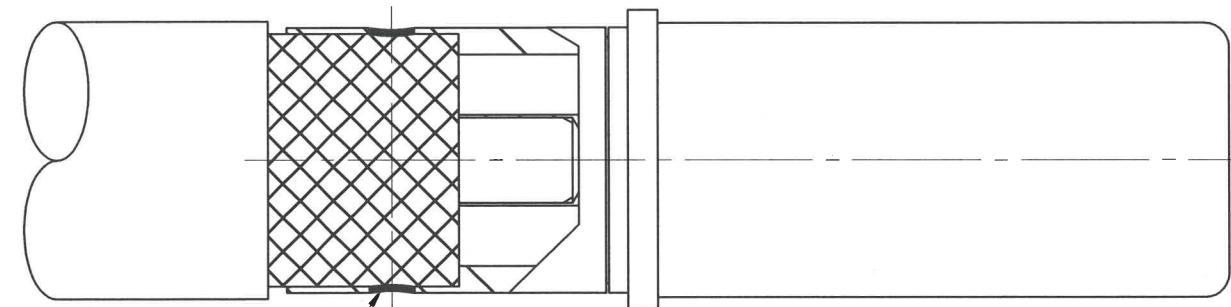
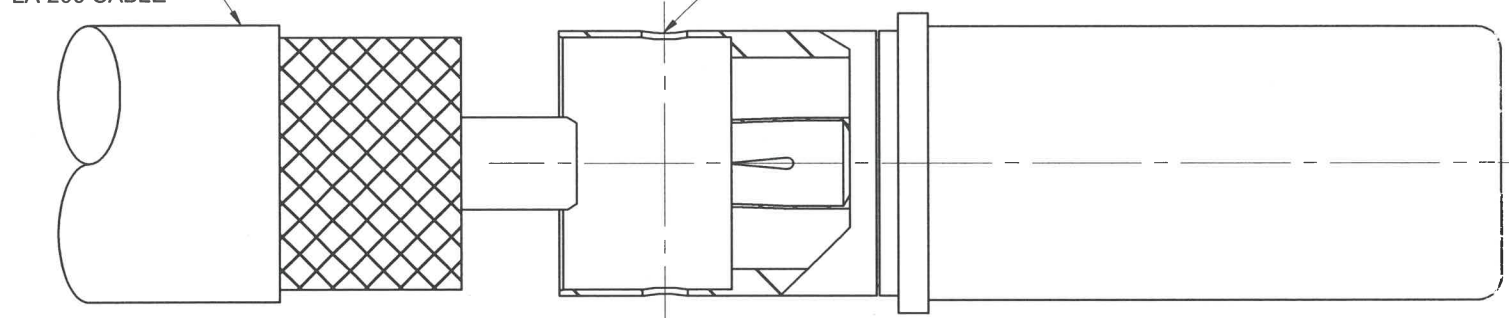
5:1

ACCEPTS Ø.264[6.71] MAX CABLE OUTER CONDUCTOR
LL 285 OR LA 290 CABLE

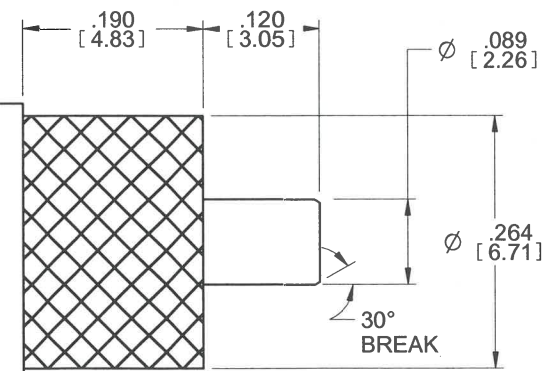
Ø .050 [1.27]

ALIGNMENT SIGHT HOLE

MATING INTERFACE PER SMI SSBP SIZE 8 (Ø.128[3.25] OUTER CONTACT ID) SOCKET COAX ASSY WITH PIN CENTER CONTACT



SOLDER



CABLE TRIM DIMENSIONS

CENTER CONTACT, OUTER CONTACT, AND RETENTION/CABLE BUSHING:	BeCu, UNS-C17300 PER ASTM B196/197. GOLD PLATE PER ASTM B488.
PRECISION FLANGED BUSHING AND ALIGNMENT SLEEVE:	S.S. ALLOY UNS-S30300 PER ASTM A582. PASSIVATED PER QQN-290.
DIELECTRIC BEADS:	ULTEM 1000 PER ASTM D5205. PTFE PER ASTM D1710.
COMPRESSION SPRING:	S. S. ALLOY 17-7PH PER ASTM A313. SPRING TEMPER.

TABLE 1. MATERIAL AND FINISHES

1. ALL LINEAR DIMENSIONS ARE IN INCHES, EXCEPT THOSE IN [] ARE IN MILLIMETERS. ALL ANGLES ARE IN DEGREES.

NOTES: UNLESS OTHERWISE SPECIFIED.

<p>CONFIDENTIAL PROPRIETARY INFORMATION OF SOUTHWESTMICROWAVE, INC. THIS DOCUMENT SHALL NOT BE REPRODUCED IN ANY MANNER</p>	<p>UNLESS OTHERWISE SPECIFIED ALL DIMENSIONS ARE IN INCHES, ALL ANGLES ARE IN DEGREES.</p> <ol style="list-style-type: none"> 32/ ALL OVER DEC TOL .XX±.01 DEC TOL .XXX±.005 DEC TOL .XXXX±.0002 ANGULAR TOL ±3° ALL PARTS TO BE FREE OF BURRS AND SHARP EDGES. R .002 MAX OR BREAK PERMITTED. FILLET R.002 MAX. ALL Ø TO BE CONCENTRIC WITHIN .001 TIR. 	<p>MATERIAL: SEE TABLE 1</p>		Southwest Microwave, Inc. 9055 South McKemy Street Tempe, Arizona 85284-2946 Telephone (480) 783-0201 Fax (480) 783-0360
		<p>51600-001S</p>	<p>DRN DAN HAKE</p>	
<p>NEXT ASSY USED ON</p>	<p>APPLICATION REF</p>	<p>CHK E98</p>	<p>DATE 1/22/09</p>	<p>SCALE 5:1</p>
		<p>ENG B.Clyatt</p>	<p>DATE 1/22/09</p>	<p>DWG. NO. 79BP60096</p>
				<p>SHEET 1 of 1</p>
				<p>REV. A</p>