

2 0 2 0

THE PERFORMANCE LEADER IN
MICROWAVE CONNECTORS



**0.9 mm
SuperMini
DC TO 67 GHz**

Ultra-Miniature Threaded
Coupling Coaxial Assemblies



Low VSWR
Low Insertion Loss
Low RF Leakage
High Temperature
Rugged and Durable
Excellent Repeatability

0.9 SuperMini

0.9 mm SuperMini connectors offer the superior performance and quality of Southwest Microwave's standard-size, high frequency connectors in a miniaturized footprint ideal for reduced-size PCB and panel applications. This versatile new line includes field-replaceable flange mount and thread-in connectors, solder-on end launch and vertical launch connectors plus complete cable assemblies. 0.9 mm SuperMini connectors offer well-matched impedance, excellent repeatability and the industry's lowest VSWR, insertion loss and RF leakage.

SPECIFICATIONS

Electrical:

- Mode Free Through 67 GHz
- Low VSWR: DC to 18.0 GHz 1.13:1 max
18.0 to 40.0 GHz 1.19:1 max
40.0 to 50.0 GHz 1.20:1 max
50.0 to 67.0 GHz 1.25:1 max
- Low RF Leakage ≤ -100 dB @ 26.5 GHz
- Low Insertion Loss

Temperature:

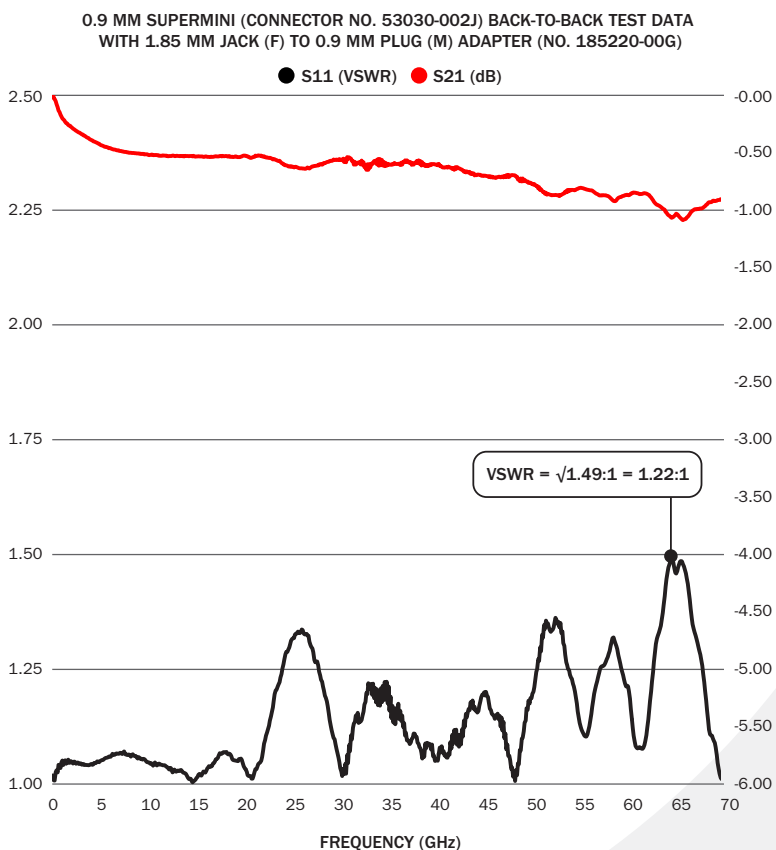
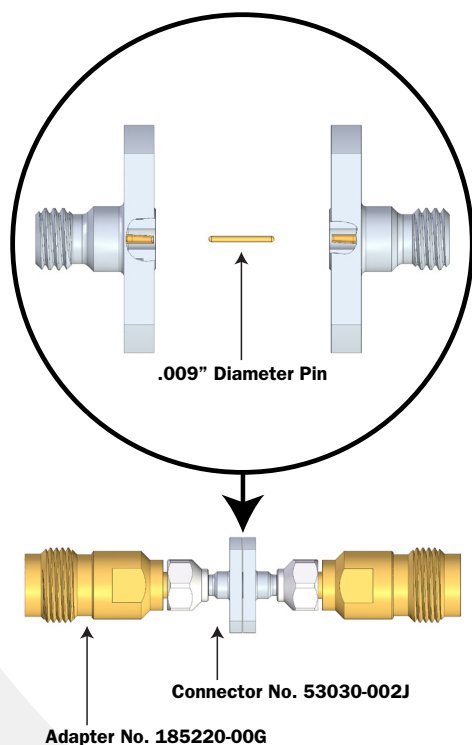
- -55°C to $+165^{\circ}\text{C}$

Materials / Construction:

- Materials and finishes vary by product type.
For data, refer to website or request Product Drawings and Specifications for desired connector.

TEST DATA

Data shown represents two 0.9 mm SuperMini 9 mil pin connectors tested back-to-back with 1.85 mm Jack (F) to 0.9 mm Plug (M) adapters, as calibration standards for the 0.9mm SuperMini interface are not available. To extract VSWR for a single connector with adapter, take the square root of the VSWR data point and divide the insertion loss data point by two.

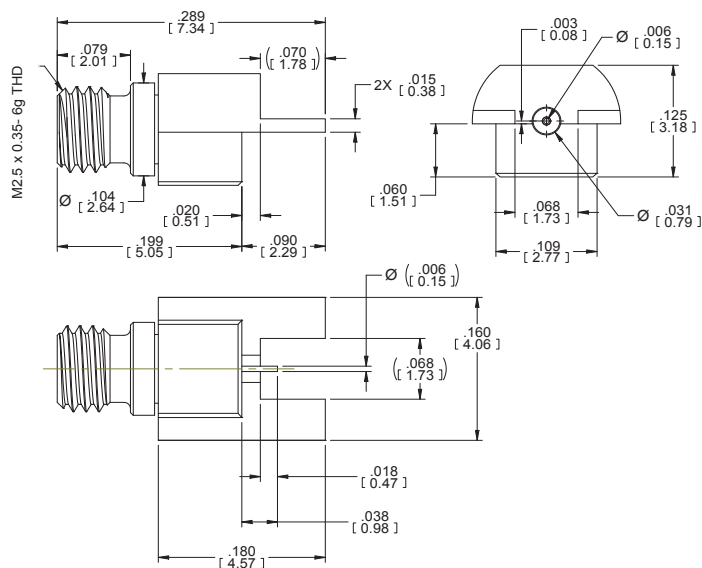


VSWR = $\sqrt{1.49:1} = 1.22:1$ for each connector with adapter, as shown.
Contact Southwest Microwave for performance specifications for all other 0.9 mm SuperMini connectors.

BOARD MOUNT CONNECTORS (SOLDER-ON)

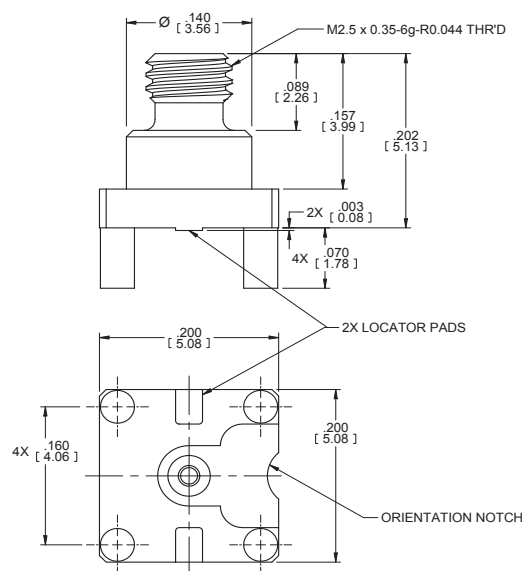
END LAUNCH JACK (FEMALE)

53056-005J



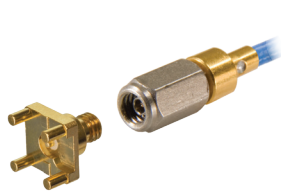
4 POST VERTICAL LAUNCH JACK (FEMALE)

53050-004J

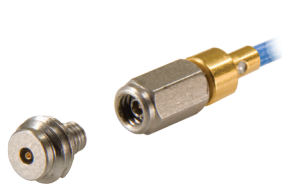


CABLE ASSEMBLIES

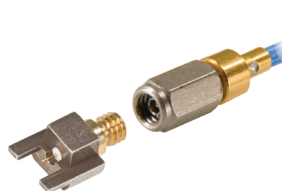
Southwest Microwave can supply complete cable assemblies (0.047 and 0.086 cable) to simplify high-performance interface to our full range of 0.9 mm SuperMini connectors. Contact the factory for more information



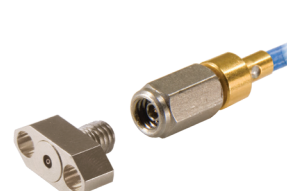
VERTICAL LAUNCH



THREAD-IN



END LAUNCH



FLANGE MOUNT

PRECISION GRADE ADAPTERS

1.85 mm JACK (F) TO 0.9 mm PLUG (M) ADAPTER: 185220-00G

1.85 mm PLUG (M) TO 0.9 MM PLUG (M): 185240-00G

1.85 mm JACK (F) TO 0.9 mm JACK (F) ADAPTER: 185310-00G

1.85 mm PLUG (M) TO 0.9 mm JACK (F) ADAPTER: 185330-00G

0.9 mm PLUG (M) TO 1.0 MM JACK (F) ADAPTER: 245220-00SF

0.9 mm JACK (F) TO 1.0 MM JACK (F) ADAPTER: 245310-00SF

0.9 mm JACK (F) TO 0.9 MM JACK (F) ADAPTER: 535310-00G