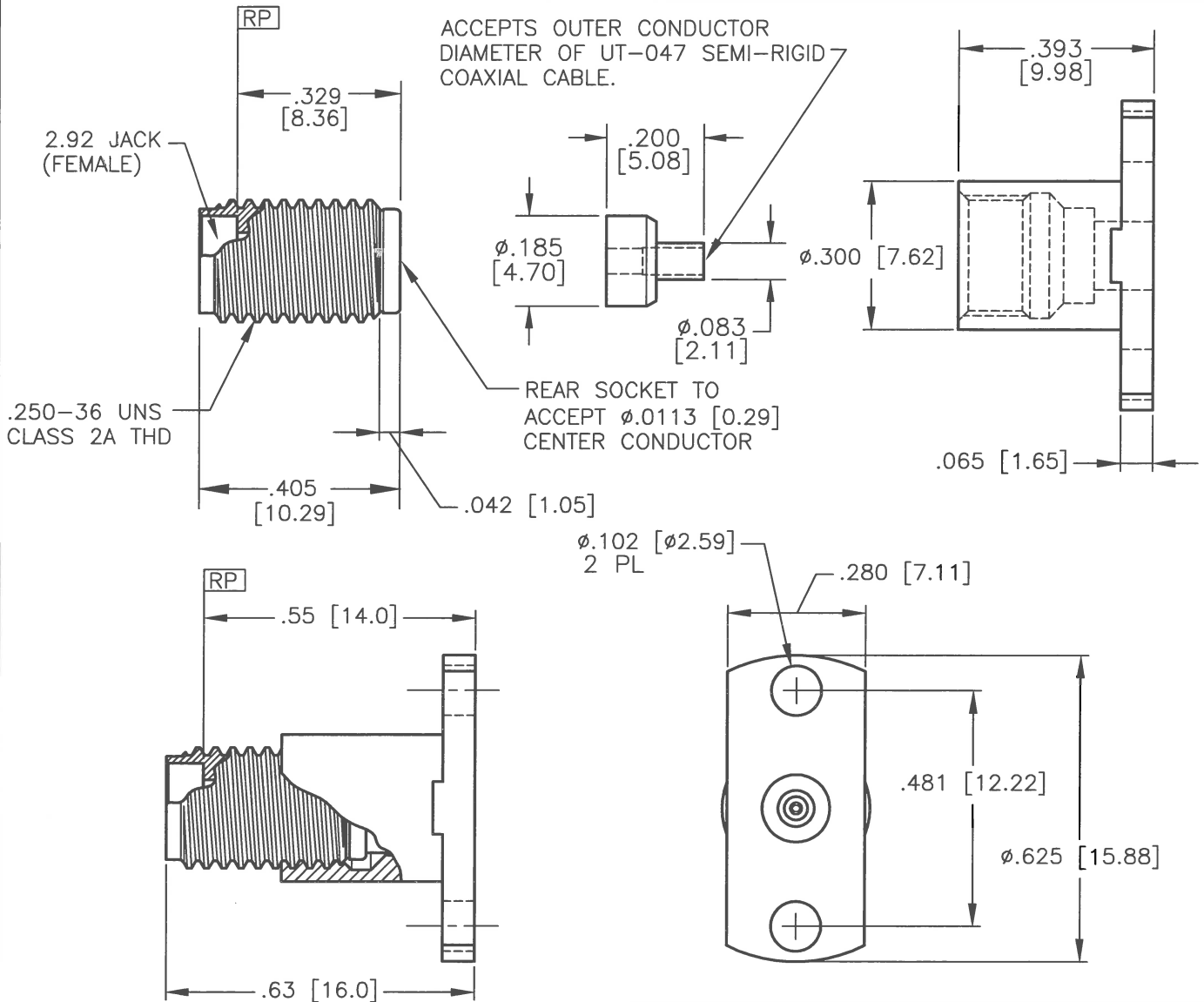


NOTE: Information herein is believed by Southwest Microwave, Inc. to be accurate. However, Southwest Microwave assumes no responsibility for any omissions or errors or inaccuracies for its use or for any infringements of patents or other rights of third parties that may result from its use. Data is intended for informational purpose only and does not constitute a contract of sale or any express or implied warranty, including any warranty of merchant ability or fitness for a particular purpose.



1. ALL DIMENSIONS ARE IN INCHES, ALL ANGLES ARE IN DEGREES. DIMENSIONS SHOWN IN BRACKETS [XXX] ARE IN MILLIMETERS.

NOTES: UNLESS OTHERWISE SPECIFIED

HOUSING & FLG CBL NUT:	STEEL, CRES ALLOY UNS-S30300 PER ASTM A582 PASSIVATE PER ASTM A967
CONTACT & CBL ADP:	BeCu, UNS C17300 PER ASTM B196/197 GOLD PLATE PER MIL-DTL-45204
DIELECTRIC:	KEL-F PER ASTM D1430
DIELECTRIC:	ULTEM 1000 PER ASTM D5205
ITEM	MATERIAL & FINISH

CABLE ASSY. INSTR.	91S59287
CONTACT GAGING SPEC.	91K52116
SPECIFICATIONS	91K52077
INTERFACE	91K52019
SPECIFICATION GROUP	DRAWING NO.

REV A RELEASE DATE: 10/6/10 APRVD. BX DATE: 10/14/10



Southwest Microwave, Inc.
 9055 South McKerny Street
 Tempe, Arizona 85284-2946
 Telephone (480) 783-0201
 Fax (480) 783-0360

TITLE
**2.92mm JACK (F) 2 HOLE FLANGE CABLE CONNECTOR
 ACCEPTS 047 SEMI-RIGID CABLE**

DRN BY: EJO	DATE: 2/10	MODEL NO.	1002-10SF	REV.	A
SCALE: 3:1		DWG. NO.	79K60439		
SHEET: 1 OF 1					