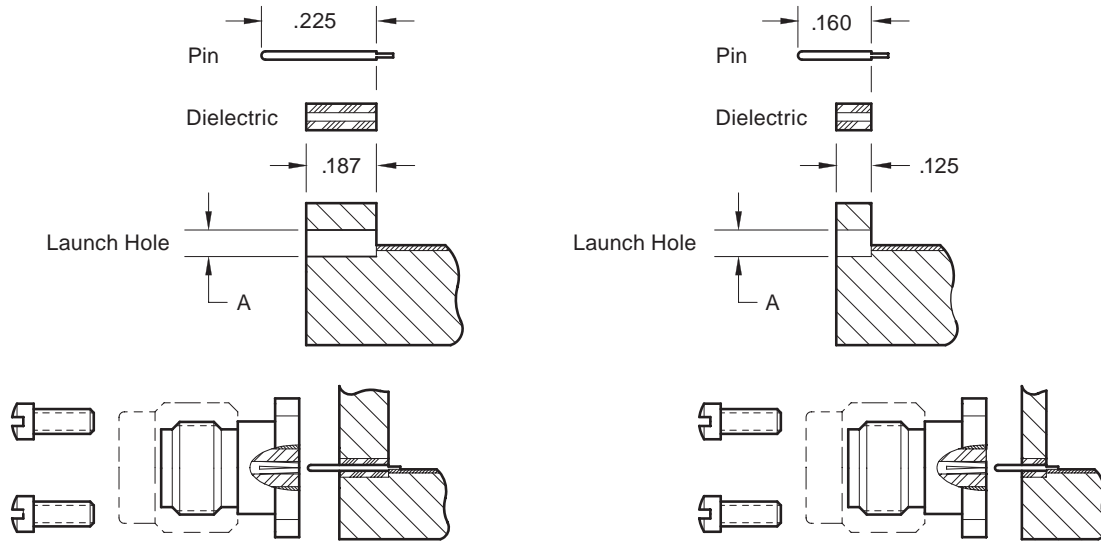
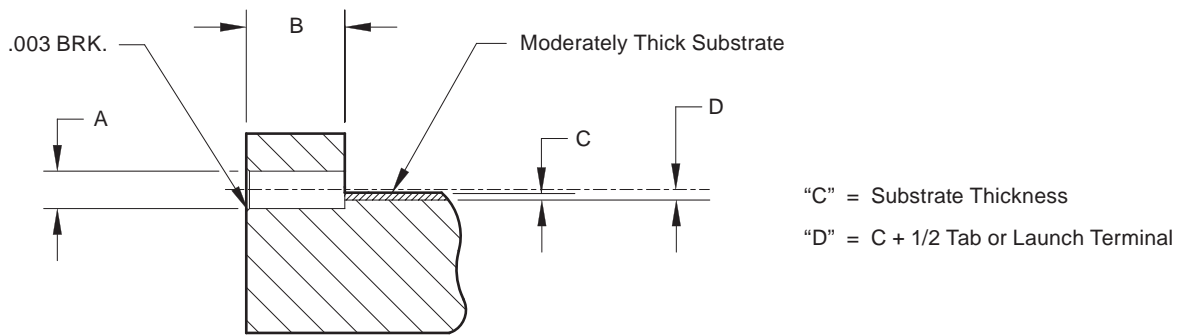


Dielectric and Launch Pin or Launch Pin/Tab Transitions for Flange Mount Connectors



Recommended Launch Hole Dimensions



.036	.237	.116	#32	.187
.020	.160	.0635	#52	.125
.020	.225	.0635	#52	.187
.015	.160	.0492	1.25 mm	.125
.015	.225	.0492	1.25 mm	.187
.012	.160	.039	#61	.125
.012	.225	.039	#61	.187
.009	.160	.029	#69	.125
.009	.225	.029	#69	.187
For Pin Dia.	For Pin Length	“A” Dia. (Drill #) ± .0003		“B” ± .002