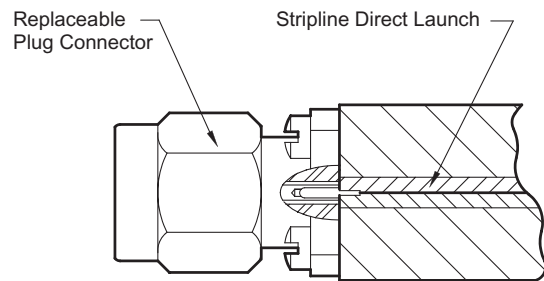
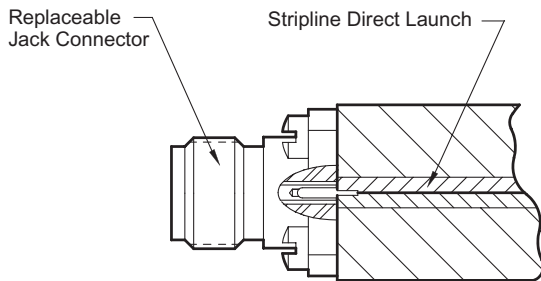


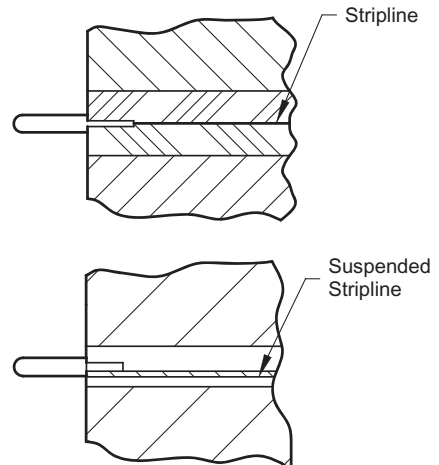
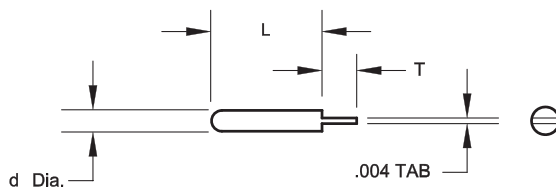
## **Launch Pin/Tab Direct Transitions To Stripline Circuits**

*For Flange Mount Connectors*

### **Launch Pin/Tab Transition to Stripline**



### **Direct Launch**



### **Materials / Construction:**

- Launch Pin: BeCu Per ASTM B196
- Plating: Gold Over Nickel Per MIL-G-45204

.020	.080	.050	<b>290-10G</b>
.018	.080	.040	<b>290-79G</b>
.015	.085	.040	<b>290-09G</b>
.012	.050	.025	<b>1090-05G</b>
.009	.050	.015	<b>1490-01G</b>
d Dia	L	T	Accessory No.

All Connectors Shown Above are Suitable for Space / Hi-Rel Applications (see Appendix).