



6-Position

Product Description

For these connectors, the external envelope for MIL-DTL-83513 (Micro-D) was selected for convenience due to popularity of the many commercial (plastic and metal) versions of these connectors.

Six (6) Size 20HD SSBP coaxes fit in Micro-D housing-envelopes otherwise “standard” for 25 Micro-D signal contacts. Board End Launch receptacles incorporate male/pin coaxes. Board connectors have 2 shell-extensions (as mounting lugs) for positive screw-hold-down to PCB. The board-side pin coaxes have “dog house” style terminators, positively oriented and epoxied in place. The outer and center contact surfaces are coplanar with mounting surfaces of the shell lugs and are soldered to the signal trace and coplanar or microstrip ground.

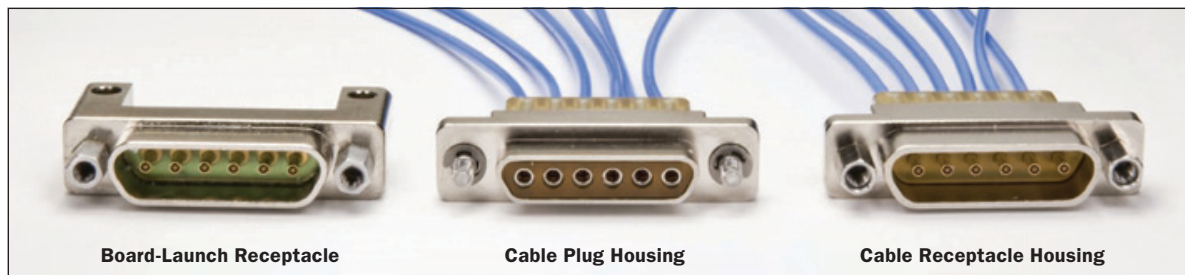
Due to movement in the spring loaded SSBP-20HD Socket (socket coax) that occurs during mating, only the pin coax can be rigidly mounted. Accordingly, board-launch receptacles are supplied with SSBP-20HD Pin “launch” coaxes installed.

Standard jackscrew hardware is used to mate the cable plug to the PC end launch receptacle and maintain firm engagement.

SSBP cable-to-cable versions of the Micro-D receptacles and plugs are available. They use the same cable SSBP-20HD coaxes used in D-Subminiature MIL-DTL-24308 connectors. They are installed and removed using the same plastic tools as standard D-Subminiature connectors.

Different size housings and combinations of SSBP-20HD coax and signal or grounding contacts can be provided. Contact Southwest Microwave for your specific needs.

Micro-D SSBP connectors showing installed Size 20HD SSBP coaxes.



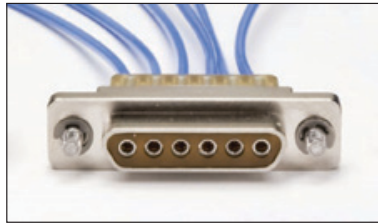
For availability of other sizes and mixed coax-signal arrangements, contact Southwest Microwave.



6-Position Cable-to-Cable Plug

SSBP-20HDS coaxes are ordered separately. Supplied with 2 male Jackscrews installed (as shown).

Dimensions

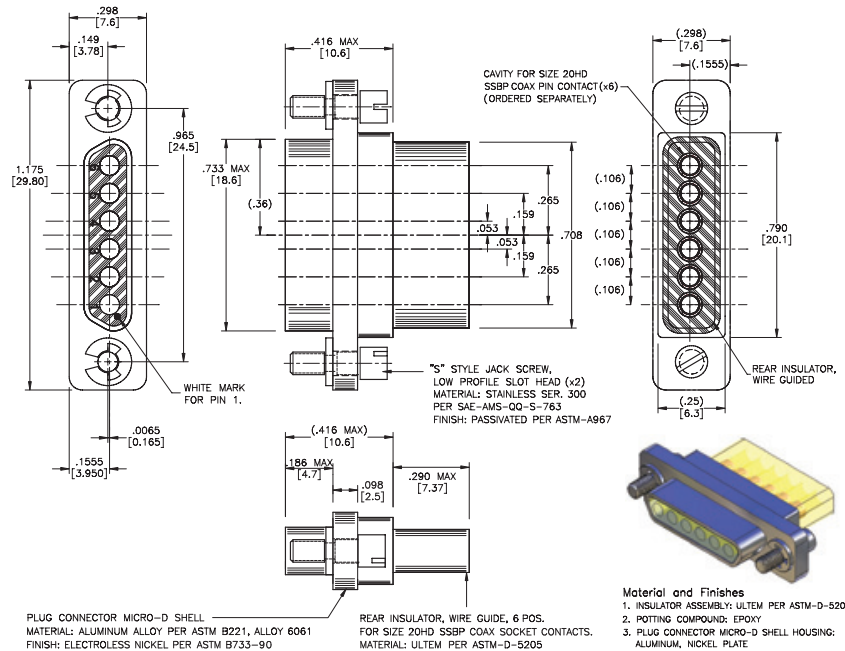


17500-4002S

Connector Assembly

Shown with SSBP-20HD Socket coaxes installed

See page 22 for SSBP-20HD Socket coaxes, purchased separately



6-Position Cable-to-Cable Receptacle

SSBP-20HD Pin coaxes are ordered separately. Supplied with 2 female Jackposts installed (as shown).

Dimensions

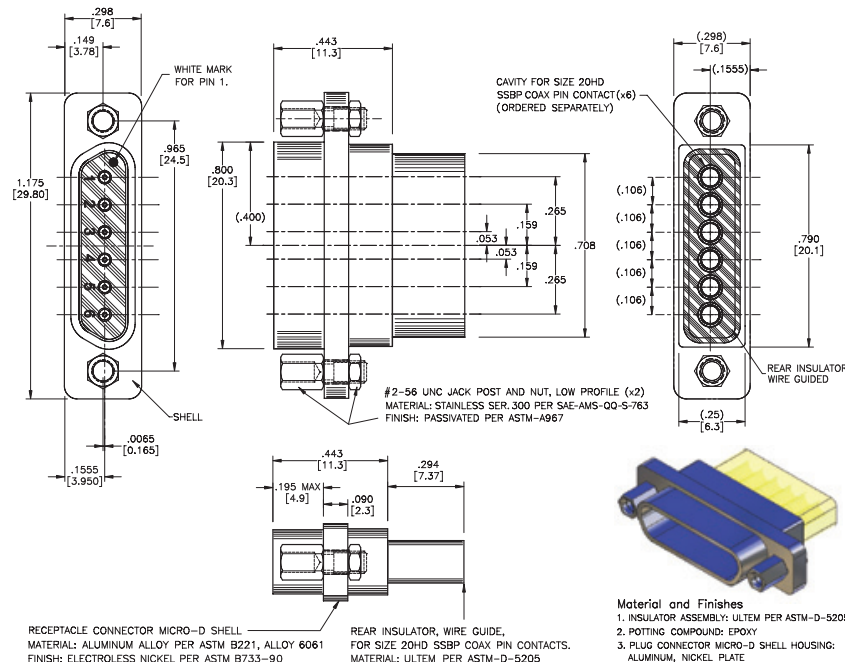


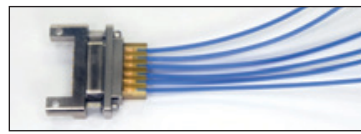
17500-4003P

Connector Assembly

Shown with SSBP-20HD Pin coaxes installed

See page 22 for SSBP-20HD Pin coaxes, purchased separately





Micro-D Connectors

Using SSBP-20HD

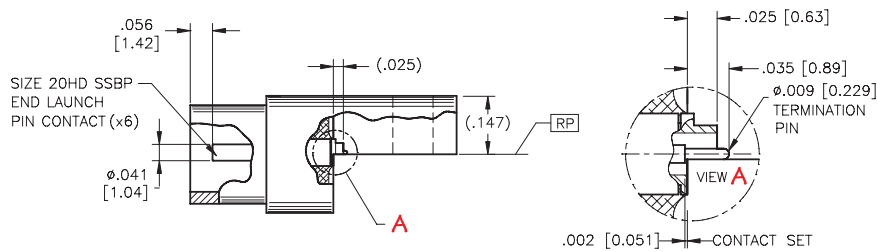
6-Position End Launch (PCB "Top Mount")

Hardware: Supplied with 2 female screwlocks installed (as shown).

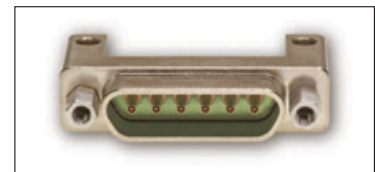
The 2-56 UNC-2A mounting screws are customer-supplied.
Additional hardware is optional and would be used on outside/
bottom of clamping plate (not between PCB and plate).

Min. Screw Length =
(.250 in. + PCB Thickness + Hardware Thickness + Screw Ext.)

(View-A) PWB Launch Configuration

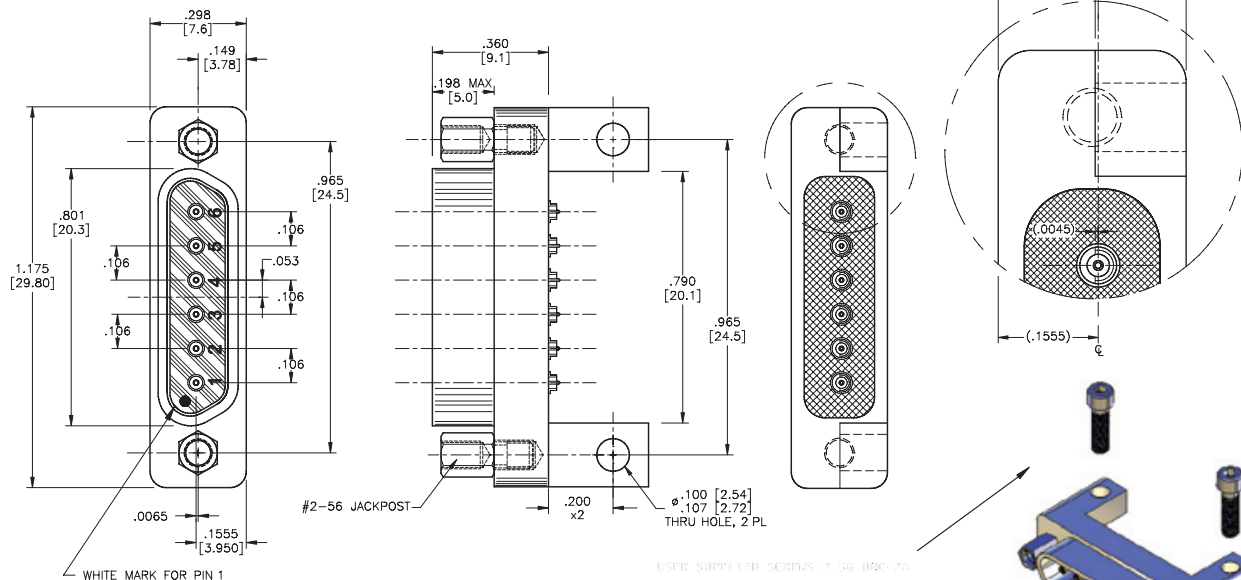


17500-4002P
**Rear Board Launch View
Connector Assembly**



17500-4002P
**Front Mating Face View
Board Launch Receptacle**

SSBP 6-Position Micro-D Receptacle End Launch Connector Assembly



Material and Finishes

- SSBP PIN CONTACT ASSY: (#20 SSBP SOCKET COPLANAR LAUNCH, $\phi .009$)
OUTER CONDUCTOR: BeCu
HOUSING, GROUND: UNS-C17300 PER ASTM-B-196/197
BUSHING & CENTER CONTACT: GOLD PLATE PER MIL-G-45204
DIELECTRIC BEADS: ULTEM 1000 PER ASTM-D-5205
KEL-F PER MIL-P-46036
- INSULATOR: ULTEM 1000 PER ASTM-D-5205
- POTTING COMPOUND: EPOXY
- RECEPTACLE CONNECTOR MICRO-D SHELL: ALUMINUM, NICKEL PLATE
- CLAMPING PLATE
STEEL CRES ALLOY UNS-S30300 PER ASTM-A582
PASSIVATED PER QQ-P-36

