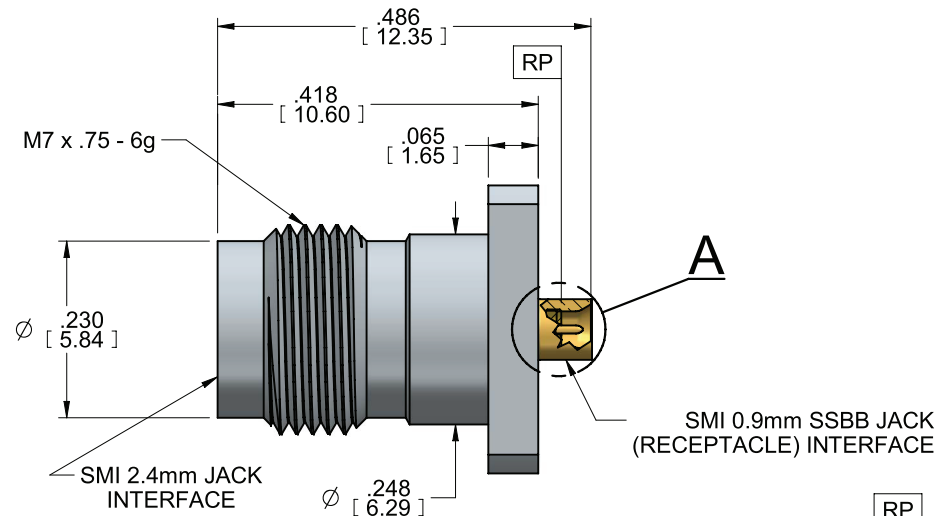


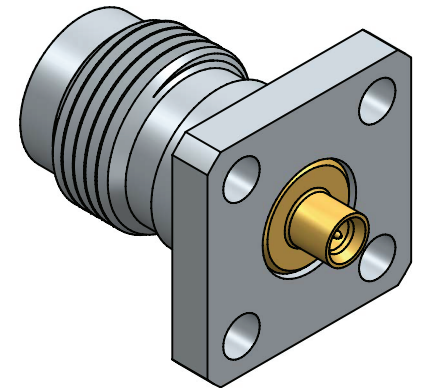
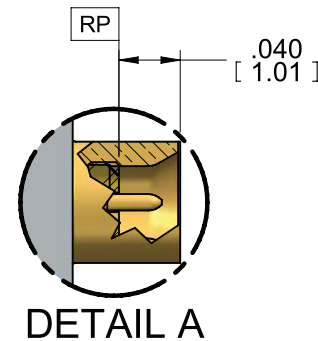
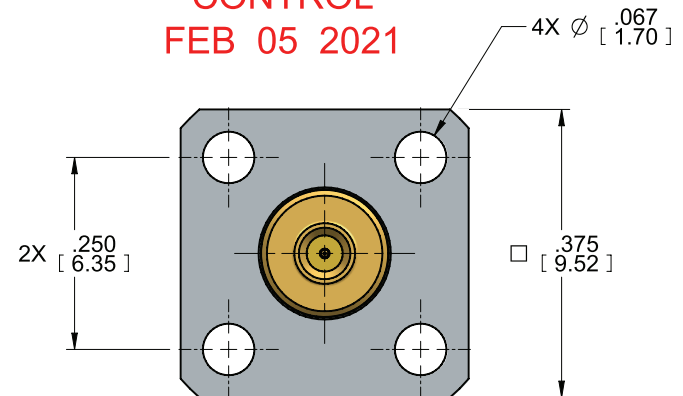
MODEL No.:

145310-00SF

NOTE: Information herein is believed by Southwest Microwave, Inc., to be accurate. However, Southwest Microwave assumes no responsibility for any omissions or errors or inaccuracies for its use or for any infringements of patents or other rights of third parties that may result from its use. Data is intended for informational purpose only and does not constitute a contract of sale or any express or implied warranty, including any warranty of merchantability or fitness for a particular purpose



DOCUMENT
CONTROL
FEB 05 2021




HOUSING:	STEEL, CRES ALLOY UNS-30300 PER ASTM A582 ELECTROPOLISHED PER ASTM B912-02 PARA 5.2 THROUGH 5.2.4
BUSHING RETAINER:	BeCu ALLOY UNS-C17300 TEMPER TD04 PER ASTM B196/197
CONTACT:	BeCu UNS-C17300 PER ASTM B196/197 GOLD PLATE PER ASTM B488
DIELECTRIC:	PEEK VICTREX HT POLYMER G22
CAPTURE BEAD:	ULTEM 1000 PER ASTM D5205
ITEM	MATERIAL & FINISH

SPECIFICATIONS	TBD
INTERFACE (2.4)	91P53661
SPECIFICATION GROUP	DWG NO.

2. CONNECTOR DESIGN IS COMPATIBLE WITH CURRENT MATERIAL AND PROCESS REQUIREMENTS FOR RoHS AND WEEE PER EUROPEAN COMMUNITY DIRECTIVE 2002/95/EC.

1. ALL DIMENSIONS ARE IN INCHES. ALL ANGLES ARE IN DEGREES. DIMENSIONS SHOWN IN BRACKETS [XXX] ARE IN MILLIMETERS.

NOTES: UNLESS OTHERWISE SPECIFIED.

REV. X0	PROTOTYPE RELEASE	APRVD: DE	DATE: 02/05/21	TITLE ADAPTER, FLANGED 2.4mm JACK 4 HOLE .375SQ FLANGE TO SSBB20 JACK (50GHz)		
 Southwest Microwave, Inc. 9055 South McKemy Street Tempe, Arizona 85284-2946 Telephone (480) 783-0201 Fax (480) 783-0360				DRN BY: MRH	DATE: 02/03/21	MODEL NO.
				SCALE: 4:1		145310-00SF
				SHEET: 1 OF 1	DWG. NO.	79KV69545
						REV. X0