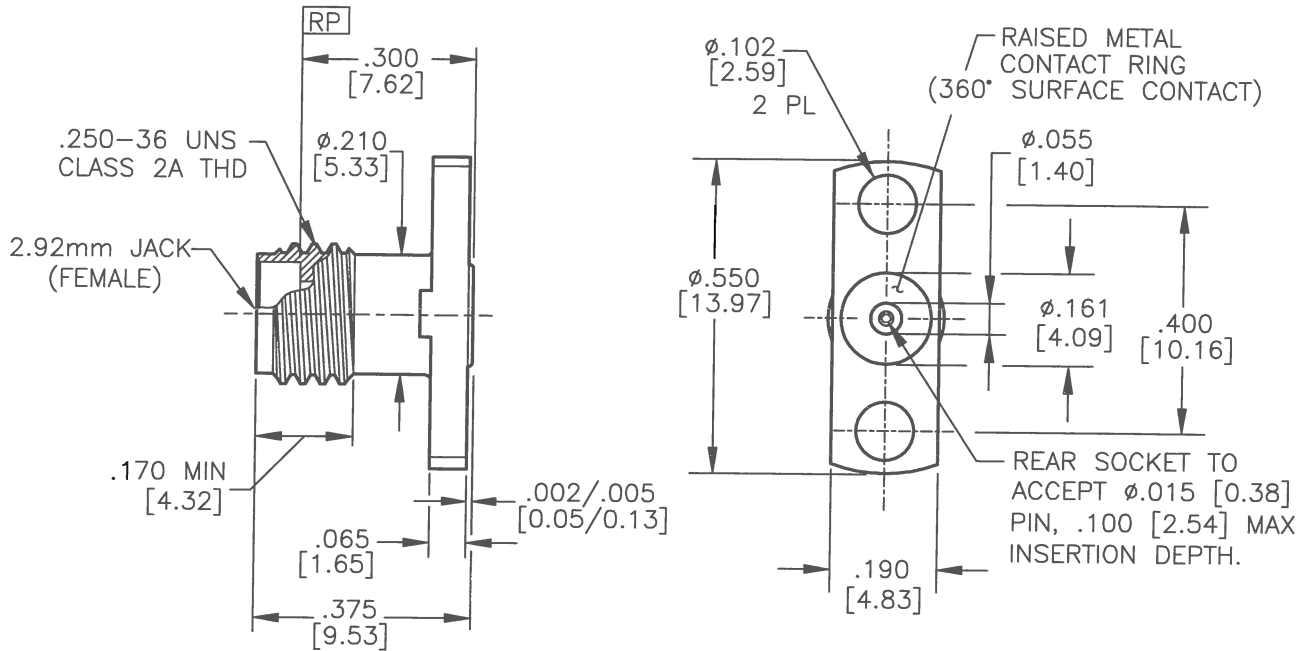


NOTE: Information herein is believed by Southwest Microwave, Inc. to be accurate. However, Southwest Microwave assumes no responsibility for any omissions or errors or inaccuracies for its use or for any infringements of patents or other rights of third parties that may result from its use. Data is intended for informational purpose only and does not constitute a contract of sale or any express or implied warranty, including any warranty of merchant ability or fitness for a particular purpose.



HOUSING:	STEEL, CRES ALLOY UNS-S30300 PER ASTM A582 PASSIVATE PER ASTM A967
CONTACT:	BeCu, UNS C17300 PER ASTM B196/197 GOLD PLATE PER MIL-DTL-45204
DIELECTRIC:	KEL-F PER ASTM D1430
DIELECTRIC:	ULTEM 1000 PER ASTM D5205
ITEM	MATERIAL & FINISH

APPLICATION SPEC	91K52167
CONTACT GAGING SPEC.	91K59162
SPECIFICATIONS	91K59161
INTERFACE	91K52019
SPECIFICATION GROUP	DRAWING NO.

1. ALL DIMENSIONS ARE IN INCHES, ALL ANGLES ARE IN DEGREES. DIMENSIONS SHOWN IN BRACKETS [XXX] ARE IN MILLIMETERS.

NOTES: UNLESS OTHERWISE SPECIFIED

REV C	ECN: 8772	INIT: EJO	DATE: 7/6/09	APRVD. <i>BR</i>	DATE: 11/18/09
----------	--------------	--------------	-----------------	---------------------	-------------------



**Southwest Microwave, Inc.**  
9055 South McKemy Street  
Tempe, Arizona 85284-2946  
Telephone (480) 783-0201  
Fax (480) 783-0360

TITLE		MODEL NO.		REV.
2.92mm JACK (F) 2 HOLE .550Lx.190W FLANGE ACCEPTS $\phi$ .015 PIN		1014-17SF		B
DRN BY: SS	DATE: 8/06	DWG. NO.		
SCALE: 3:1		79K58680		
SHEET: 1 OF 1				