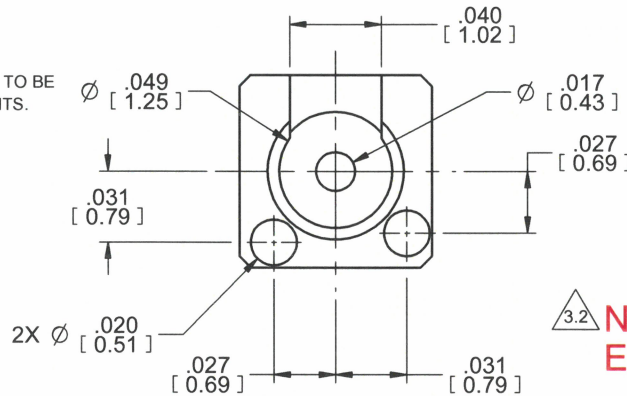
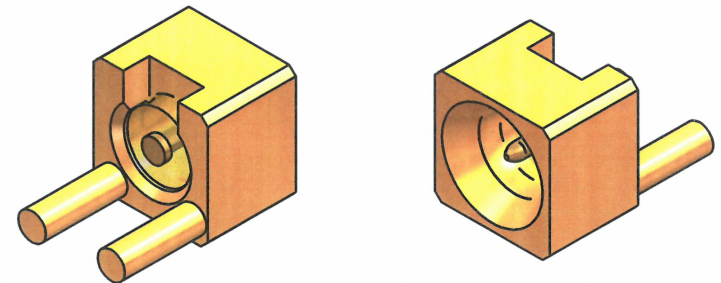
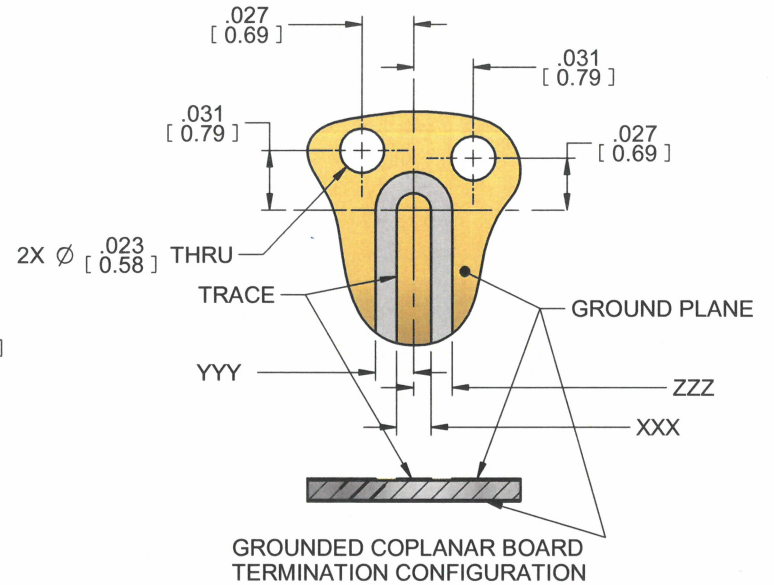
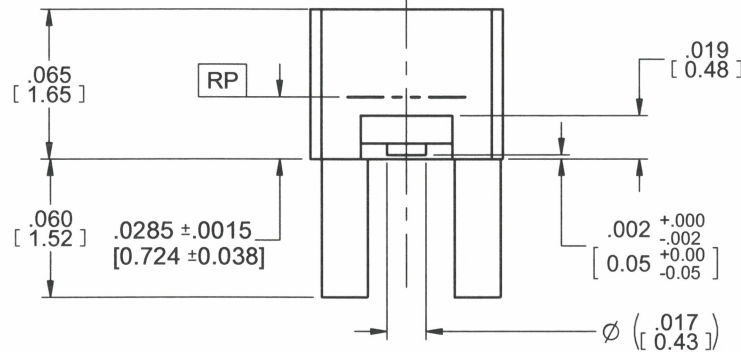
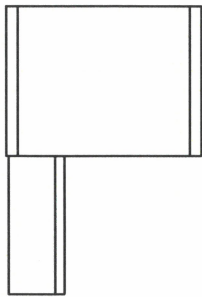
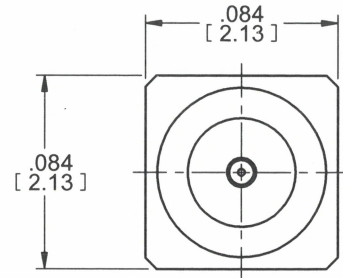


MODEL No.:

55057-005J

NOTE: Information herein is believed by Southwest Microwave, Inc., to be accurate. However, Southwest Microwave assumes no responsibility for any omissions or errors or inaccuracies for its use or for any infringements of patents or other rights of third parties that may result from its use. Data is intended for informational purpose only and does not constitute a contract of sale or any express or implied warranty, including any warranty of merchantability or fitness for a particular purpose

DOCUMENT CONTROL
JUL 09 2021



4. GROUND PLANE AND TRACE SPECIFIC CONFIGURATIONS TO BE DETERMINED BY INDIVIDUAL APPLICATION REQUIREMENTS.

3. MATERIAL AND FINISH:

3.1 MATERIALS

HOUSING AND CENTER CONTACT:
BeCu ALLOY UNS-C17300 TEMPER TD04
PER ASTM B196/197.

DIELECTRIC BEAD:
PEEK-HT

3.2 FINISHES

HOUSING AND CENTER CONTACT:
GOLD PLATE PER MIL-DTL-45204
- HOUSING: GOLD THICKNESS .000010 - .000025
- CONTACT: GOLD THICKNESS .000025 - .000040


2. CONNECTOR DESIGN IS COMPATIBLE WITH CURRENT MATERIAL AND PROCESS REQUIREMENTS FOR RoHS AND WEEE PER EUROPEAN COMMUNITY DIRECTIVE 2002/95/EC.

1. ALL DIMENSIONS ARE IN INCHES. ALL ANGLES ARE IN DEGREES. DIMENSIONS SHOWN IN BRACKETS [XXX] ARE IN MILLIMETERS.

NOTES: UNLESS OTHERWISE SPECIFIED.

3.2 NOTE: 55057-005J IS THE SAME AS 55057-003J EXCEPT FOR THINNER GOLD PLATING FINISH.

FSCM NO. 66049

REV. B	ECN: 687	DATE: 07/07/21	APRVD: DE	DATE: 7/9/21	TITLE	Super-Mini Board-to-Board VERTICAL MOUNT JACK (FEMALE), (SMOOTH BORE) THRU HOLE, 2 POST .060 LONG CGCPW OR MICROSTRIP LAUNCH		
 SOUTHWEST MICROWAVE Southwest Microwave, Inc. 9055 South McKemy Street Tempe, Arizona 85284-2946 Telephone (480) 783-0201 Fax (480) 783-0360					DRN BY: EJO	DATE: 11/26/13	MODEL NO.	55057-005J
					SCALE 12:1		DWG. NO.	79BB61207
SHEET: 1 OF 1					REV. B			