

MODEL No.:

2270-01G

NOTE: Information herein is believed by Southwest Microwave, Inc. to be accurate. However, Southwest Microwave assumes no responsibility for any omissions or errors or inaccuracies for its use or for any infringements of patents or other rights of third parties that may result from its use. Data is intended for informational purpose only and does not constitute a contract of sale or any express or implied warranty, including any warranty of merchant ability or fitness for a particular purpose.

DOCUMENT
CONTROL

JUG 27 2021

6. PERFORMANCE IS DEPENDENT UPON THE SPECIFIC CABLE SELECTED AND THE THIRD-PARTY CABLE PREPARATION BEYOND THE CONTROL OF SOUTHWEST MICROWAVE.

5. SPECIFICATIONS PER SPECIFICATION SHEET 91BV61132.

4. CABLE TERMINATION INSTRUCTION SPEC. 91S61015.

3. MATERIAL AND FINISH:

3.1 MATERIALS

3.1.1 CENTER CONDUCTOR AND RETAINING RING:
BeCu ALLOY

3.1.2 HOUSING AND BUSHING:
BRASS ALLOY

3.1.3 DIELECTRIC INSULATOR:
HIGH TEMPERATURE POLYMER

3.1.4 BEAD RING:
ULTEM 1000 PER ASTM D5205

3.1.5 COUPLING NUT:
STAINLESS STEEL

3.1.6 GASKET:
SILICONE RUBBER

3.2 FINISHES

3.2.1 HOUSING AND INTERFACE BUSHING:
GOLD PLATE PER MIL-DTL-45204

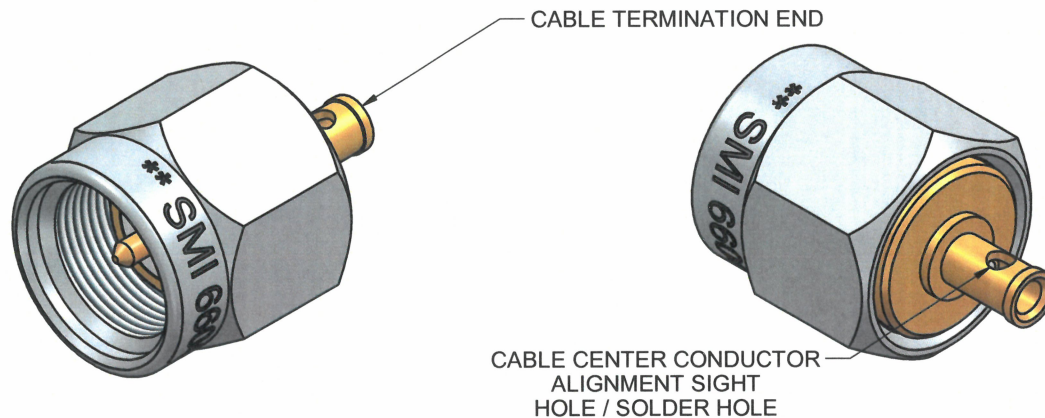
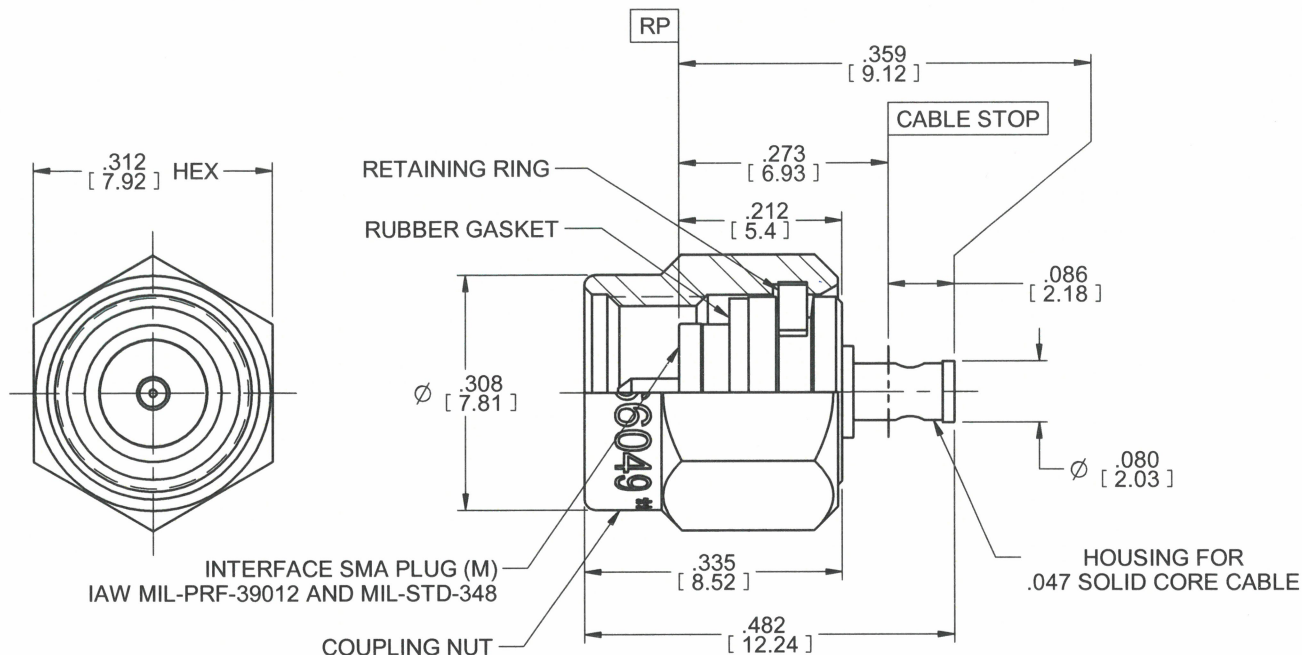
3.2.2 CENTER CONDUCTOR
GOLD PLATE PER ASTM B488

3.2.3 COUPLING NUT:
PASSIVATE PER ASTM A967

2. CONNECTOR DESIGN IS COMPATIBLE WITH CURRENT MATERIAL AND PROCESS REQUIREMENTS FOR RoHS AND WEEE PER EUROPEAN COMMUNITY DIRECTIVE 2002/95/EC.

1. ALL DIMENSIONS ARE IN INCHES. ALL ANGLES ARE IN DEGREES. DIMENSIONS SHOWN IN BRACKETS [XXX] ARE IN MILLIMETERS.

NOTES: UNLESS OTHERWISE SPECIFIED.



REV: B	ECN 714	ECN BY: JAC	DATE: 08/25/21	APRVD: JE	DATE: 8/21/21
--------	---------	-------------	----------------	-----------	---------------

**SOUTHWEST
MICROWAVE**

Southwest Microwave, Inc.
9055 South McKerny Street
Tempe, Arizona 85284-2946
Telephone (480) 783-0201
Fax (480) 783-0360

TITLE

**SMA PLUG (M) DIRECT SOLDER CABLE
CONNECTOR FOR 047 SOLID CORE CABLE**

DRN BY: T.CLARE
DATE: 04/10/2014
SCALE: 4:1

SHEET: 1 OF 1

MODEL NO.

2270-01G

DWG. NO.

79BV61471

REV.

B