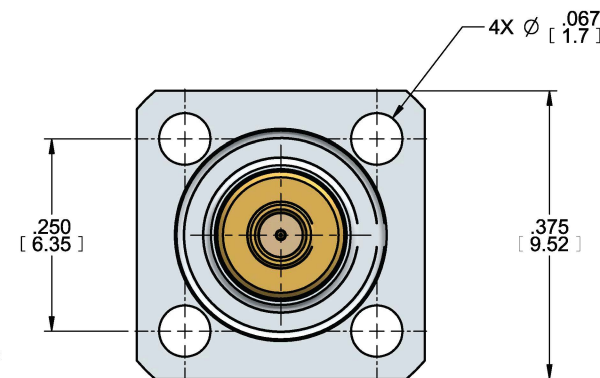
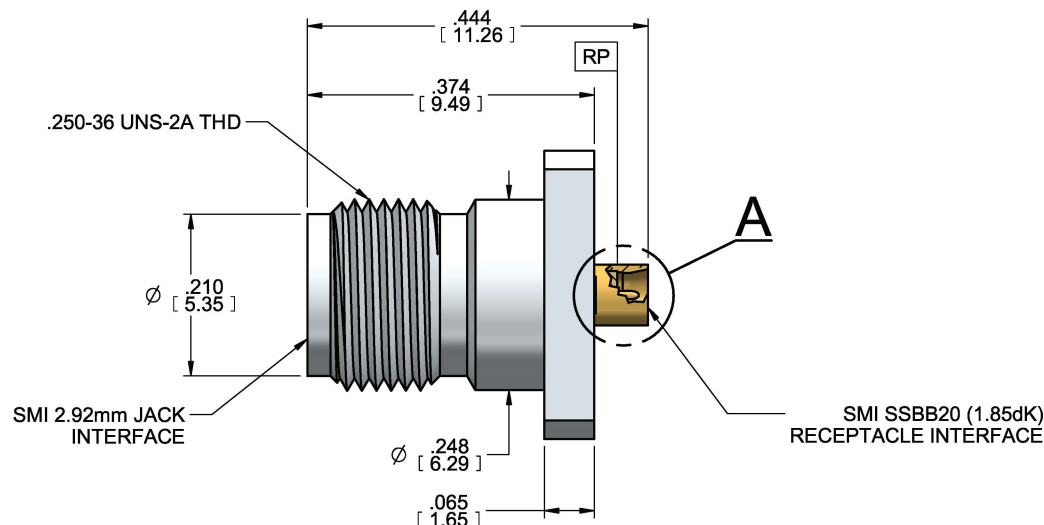


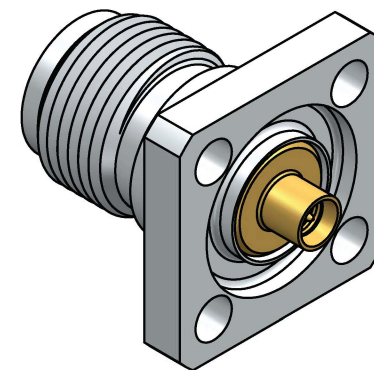
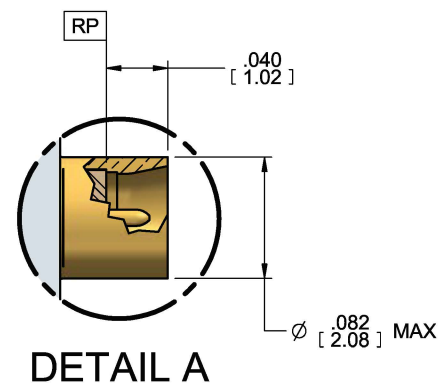
MODEL No.:

1055910-01SF

NOTE: Information herein is believed by Southwest Microwave, Inc. to be accurate. However, Southwest Microwave assumes no responsibility for any omissions or errors or inaccuracies for its use or for any infringements of patents or other rights of third parties that may result from its use. Data is intended for informational purpose only and does not constitute a contract of sale or any express or implied warranty, including any warranty of merchant ability or fitness for a particular purpose.



**DOCUMENT  
CONTROL  
FEB 28 2022**



HOUSING:	STEEL, CRES ALLOY UNS-30300 PER ASTM A582 PASSIVATED PER ASTM A967
BUSHING:	BeCu ALLOY UNS-C17300 TEMPER TD04 PER ASTM B196/197 GOLD PLATE PER MIL-DTL-45204
CONTACT:	BeCu ALLOY UNS-C17300 PER ASTM B196/197 GOLD PLATE PER ASTM B488
DIELECTRIC:	PEEK-HT
CAPTURE BEAD:	ULTEM 1000 PER ASTM D5205
ITEM	MATERIAL & FINISH

2. CONNECTOR DESIGN IS COMPATIBLE WITH CURRENT MATERIAL AND PROCESS REQUIREMENTS FOR RoHS AND WEEE PER EUROPEAN COMMUNITY DIRECTIVE 2002/95/EC.

1. ALL DIMENSIONS ARE IN INCHES. ALL ANGLES ARE IN DEGREES. DIMENSIONS SHOWN IN BRACKETS [XXX] ARE IN MILLIMETERS.

NOTES: UNLESS OTHERWISE SPECIFIED.

REV C	ECN 776	REV BY: JAC	DATE: 02/25/22	APRVD: DE	DATE: 02/28/22
-------	---------	-------------	----------------	-----------	----------------



Southwest Microwave, Inc.  
9055 South McKerny Street  
Tempe, Arizona 85284-2946  
Telephone (480) 783-0201  
Fax (480) 783-0360

TITLE **MODEL 1055910-01SF  
2.92 J 4H .375SQ FLG TO SSBB20  
RECPT DET (1.85dK)**

DRN BY: MRH	DATE: 11/25/20
SCALE: 4:1	
SHEET: 1 OF 1	

DWG. NO.

79KV69502

REV.  
**C**